

REV CJ

FIG 2
 -A: ALIGNMENT PIN OPTION (MOLDED)
 DIFFERENT AS SHOWN. OTHERWISE SAME AS FIG. 1.

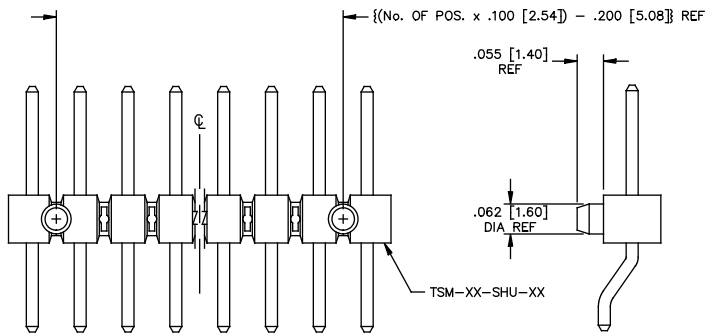


FIG 4
 -A: ALIGNMENT PIN OPTION (STAKED)
 DIFFERENT AS SHOWN. OTHERWISE SAME AS FIG. 1.

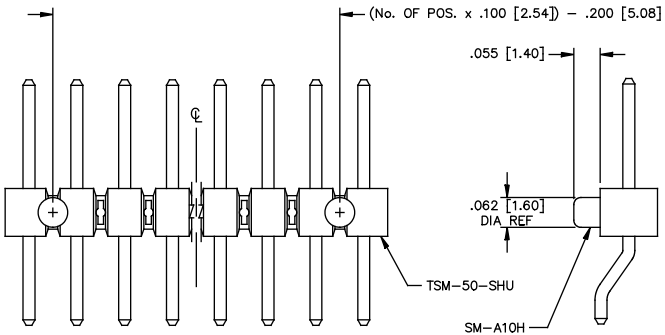
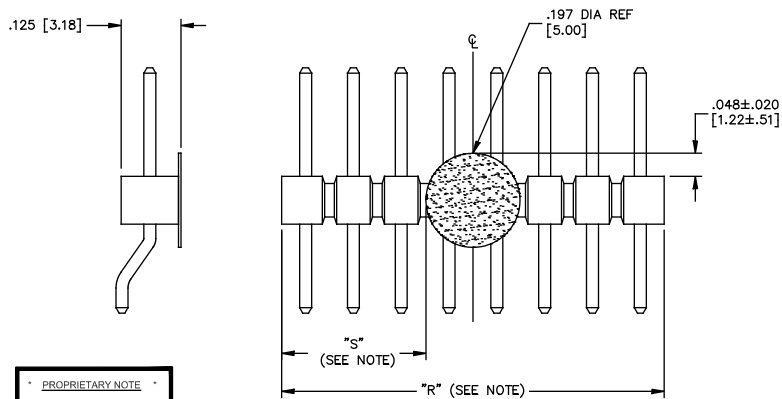


FIG 6
 -K POLYIMIDE FILM PAD



NOTE:
 "R" = USED MEASURED DIMENSIONS (REF)
 "S" = $\{("R" - .1969 [5.000]) / 2\} \pm .020 [.51]$

PROPRIETARY NOTE
 THIS DOCUMENT CONTAINS CONFIDENTIAL AND PROPRIETARY INFORMATION AND ALL RIGHTS, INCLUDING PATENT RIGHTS, ARE RESERVED BY SAMTEC, INC. THIS DOCUMENT SHALL NOT BE REPRODUCED, COPIED, OR TRANSMITTED IN ANY MANNER WITHOUT THE EXPRESS WRITTEN CONSENT OF SAMTEC, INC.

DIMENSIONS ARE IN INCHES

UNLESS OTHERWISE NOTED

TOLERANCES ARE:

ONE PLACE DECIMALS $\pm .1 [3]$
 TWO PLACE DECIMALS $\pm .01 [.25]$

THREE PLACE DECIMALS $\pm .005 [.13]$
 FOUR PLACE DECIMALS $\pm .0020 [.051]$

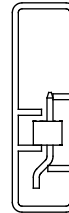
ANGLES $\pm 2^\circ$

TITLE:
TERMINAL STRIP
SINGLE SURFACE MOUNT

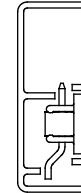
DWG NO:
 TSM-1XX-XX-XXX-SH-XX-XXX-XX

SHEET 2 OF 2

FIG 5
 PACKAGING



PT-TSM002-SH-K
 USE TP-24



PT-TSM003-SH-P
 USE TP-09

- 1 ALL PARTS WITH PLASTIC PAD USE PT-TSM003-SH-P
- 2 ALL PARTS WITHOUT PLASTIC PAD USE PT-TSM002-SH-K

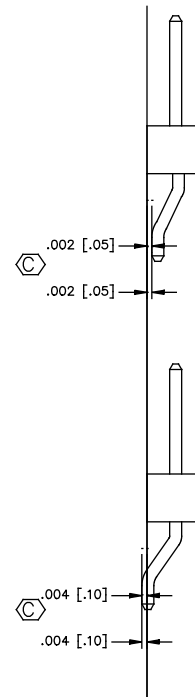


FIG 7

-SH SURFACEMOUNT DIAGRAM

samtec

EXISPROD\ASSEMBLY\100 TSMHAM2
 520 PARK EAST BLVD. NEW ALBANY, INDIANA 47150
 PHONE (812) 944-6733 P.O. BOX 1147
 CODE 55322

MADE BY:
 REIDINGER 7-19-91

TSM-1XX-XX-XXX-SH-XX-XXX-XX
 SHEET 02