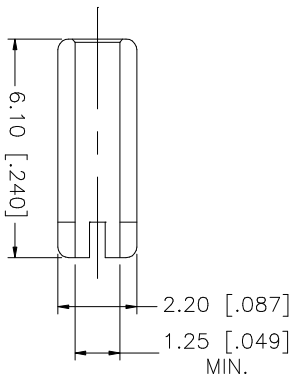
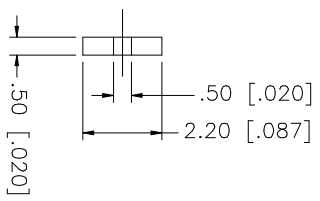
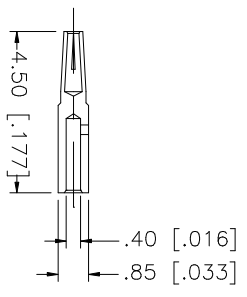
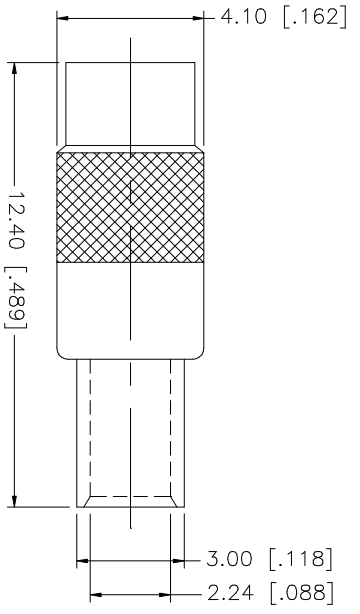
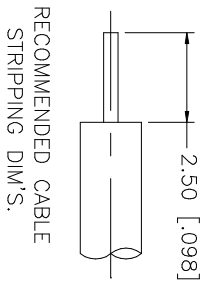


REV.	DATE	DESCRIPTION
NC	05/08/03	INITIAL RELEASE



NOTE:  
1. CONTACT PIN TO SOLDER

QTY	FINISH	MATERIAL	DESCRIPTION
1	GOLD	BRASS	SOLDER BARREL
1	GOLD	BER, COPPER	CONTACT PIN
1	NATURAL	TEFLON	INSULATOR
1	GOLD	BRASS	BODY

APPROVALS	DATE	PART DESCRIPTION
DRAWN G.R.S.	05/08/03	MMCX SEMI-RIGID JACK (FOR .047" SEMI-RIGID CABLE)
CHECKED		
ISSUED		
SHEET 1 OF 1		

CAD FILE	C:/262/262125.DWG	DWG. NO.	262125.DWG	REV.	NC	SIZE	A	SCALE	NA
----------	-------------------	----------	------------	------	----	------	---	-------	----

**Amphenol Connex**

UNLESS OTHERWISE SPECIFIED DIMENSIONS ARE IN MILLIMETERS DIMENSIONS IN [ ] ARE IN INCHES AND FOR CUSTOMER REFERENCE ONLY.  
UNLESS OTHERWISE SPECIFIED TOLERANCES FOR MILLIMETERS ARE:  
0.5 - 8mm ± 0.20mm  
8 - 30mm ± 0.40mm  
30 - 120mm ± 0.50mm  
UNLESS OTHERWISE SPECIFIED TOLERANCES FOR INCHES ARE:  
.020 - .315 = ± 0.007"  
.315 - 1.180 = ± 0.015"  
1.180 - 4.724 = ± 0.020"  
DO NOT SCALE DRAWING