

4

3

2

1

THIS DRAWING IS UNPUBLISHED.

RELEASED FOR PUBLICATION

© COPYRIGHT

ALL RIGHTS RESERVED.

LOC DIST

REVISIONS

P	LTR	DESCRIPTION	DATE	DWN	APVD
	K1	ECR-13-003552	26FEB2013	XZ	LZ

REPLACED BY OCEAN STYLE APPLICATOR PART NUMBER 2151224-1


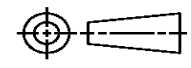
FOR REPLACEMENT PARTS FOR APPLICATOR 567336 REFER TO ADDITIONAL PAGE(S). SPARE PARTS KIT (IF LISTED) WILL REMAIN AVAILABLE.

THE REPLACEMENT OCEAN STYLE APPLICATOR HAS THE SAME TERMINATOR/PRESS INTERFACE AS APPLICATOR 567336

Dimensioning and tolerancing per ASME Y14.5M-2009

B

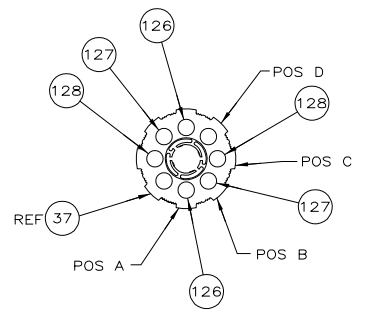
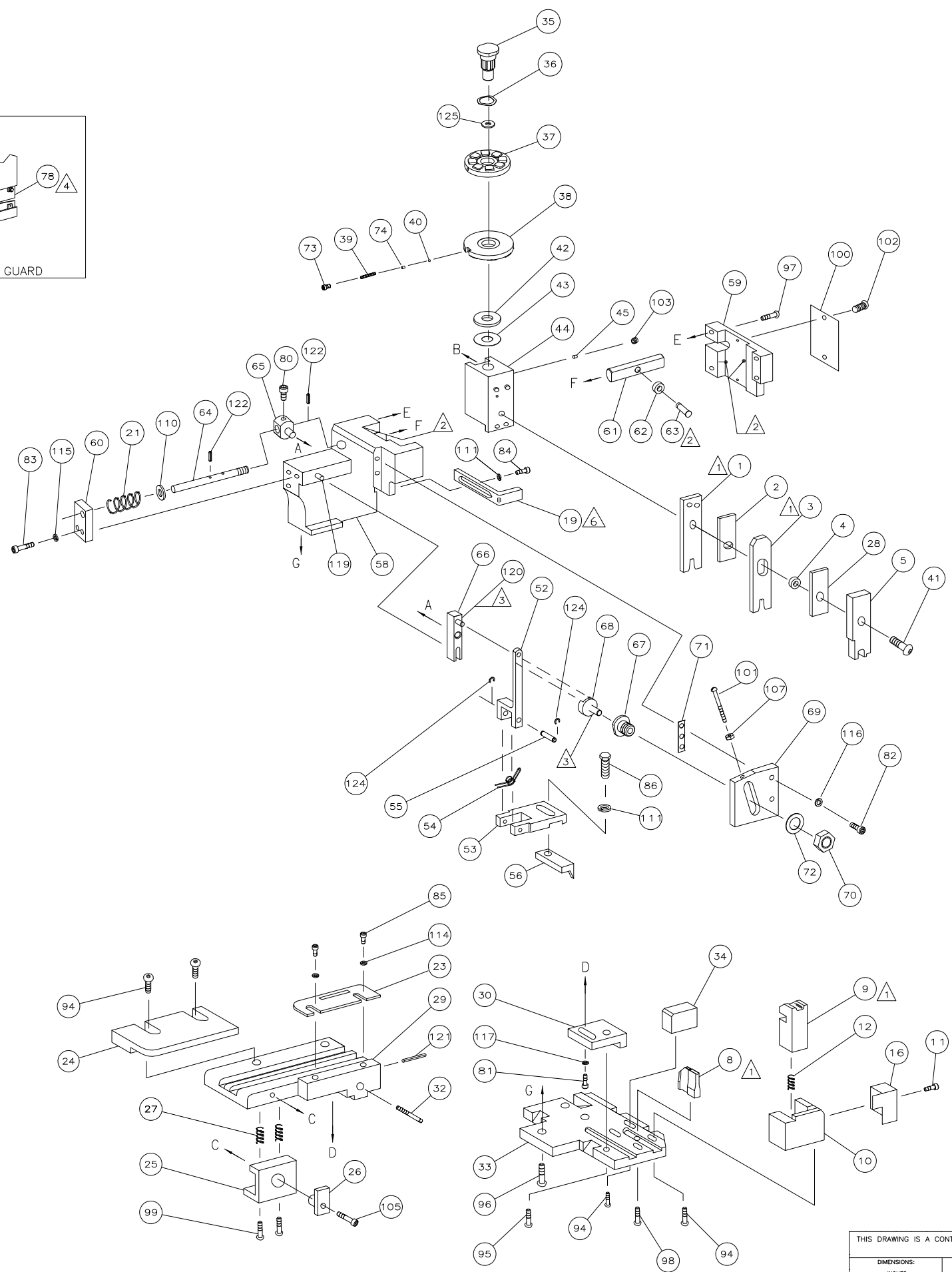
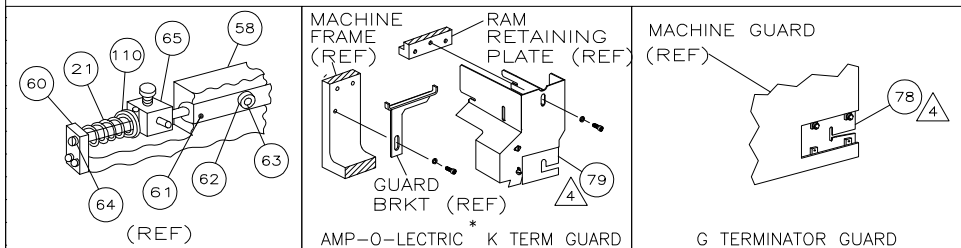
A

THIS DRAWING IS A CONTROLLED DOCUMENT.		DWN X. ZHAO	 TE Connectivity	
DIMENSIONS:		CHK L. ZHANG		
		APVD L. ZHANG	NAME MINIATURE QUICK CHANGE APPLICATOR SIDE FEED (MINI AMP-IN)	
TOLERANCES UNLESS OTHERWISE SPECIFIED:		PRODUCT SPEC	RESTRICTED TO	
0 PLC ± 1 PLC ± 2 PLC ± 3 PLC ± 4 PLC ± ANGLES ±		APPLICATION SPEC	SIZE A3	CAGE CODE
MATERIAL	FINISH	WEIGHT	DRAWING NO ©- 567336	
			SCALE	SHEET 1 OF 2 REV K1

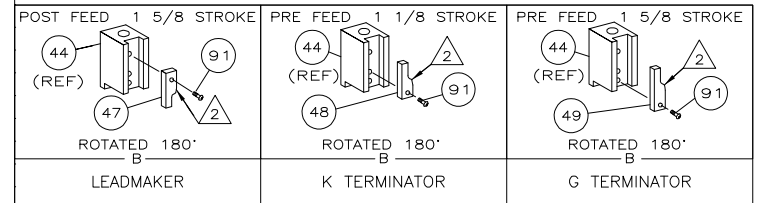
Dimensioning and tolerancing per ASME Y14.5M-2009

THIS DRAWING IS UNPUBLISHED. RELEASED FOR PUBLICATION
 © COPYRIGHT BY TYCO ELECTRONICS CORPORATION. ALL RIGHTS RESERVED.

LOC	DIST	REVISIONS			
A	66	REV	DATE	BY	APPD
		1			
		SEE SHEET 1			



* Trademark of AMP Incorporated



AMP 4805 REV 31MAR2000
 11JAN2007 10:50am

THIS DRAWING IS A CONTROLLED DOCUMENT.		OWN: M. YOUNGER	08NOV2006	Tyco Electronics Corporation Harrisburg, PA 17105-3608	
DIMENSIONS: INCHES		TOLERANCES UNLESS OTHERWISE SPECIFIED:		NAME: MINIATURE QUICK CHANGE APPLICATOR SIDE FEED (MINI AMP-IN)	
0 PLC	± .005	1 PLC	± .002	APVD	
2 PLC	± .001	3 PLC	± .0005	PRODUCT SPEC	
4 PLC	± .0002	5 PLC	± .0001	APPLICATION SPEC	
ANGLES:	± .0001	FINISH		WEIGHT	
MATERIAL				SIZE	CAGE CODE
				A1	00779
CUSTOMER DRAWING				DRAWING NO	567336
				RESTRICTED TO	
				SCALE	1:1
				SHEET	2 OF 2
				REV	K