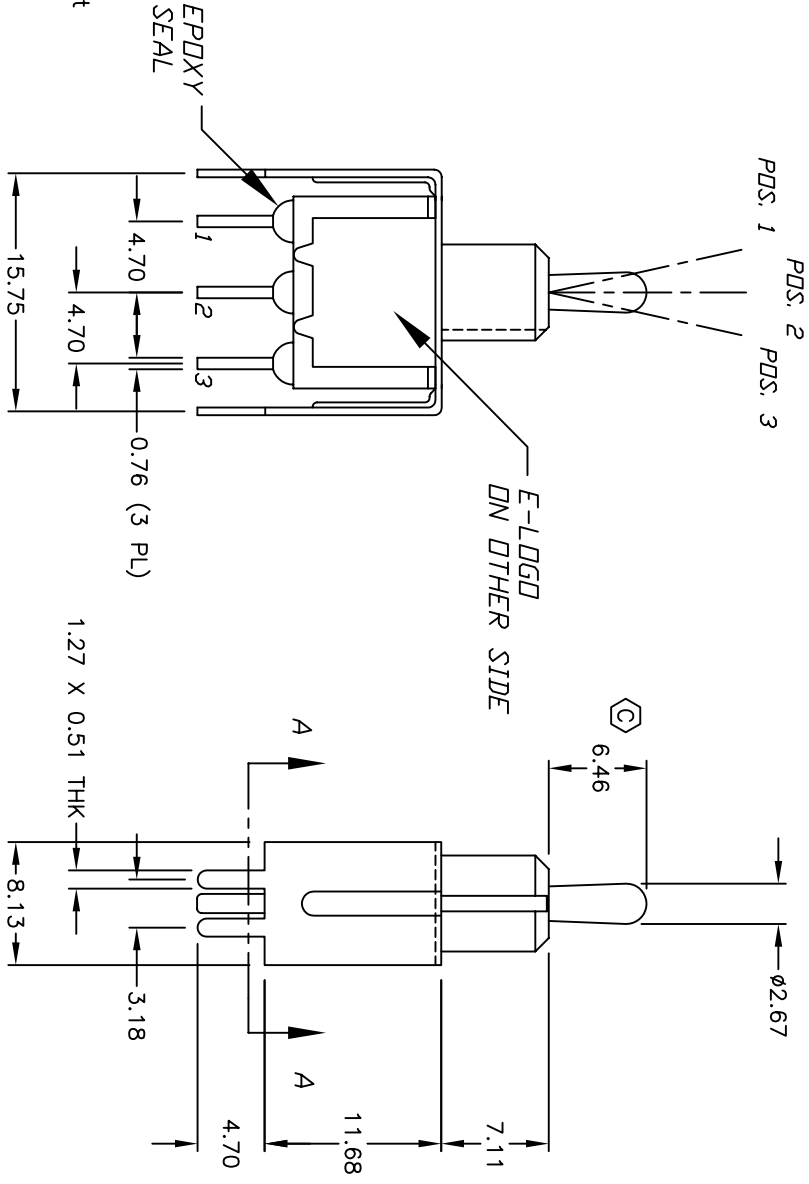


CIRCUIT: SPDT

SWITCH FUNCTION		
POS. 1	POS. 2	POS. 3
DN	OFF	DN
2-3	OPEN	2-1

NOTES:

1. ALL DIMENSIONS IN MM
2. GENERAL TOLERANCE: X.X=±0.4 X.XX=±0.25
3. TERM. NOS. FOR REF. ONLY
4. RATING: 0.4VA @20V AC or DC max.
5. FIXED TERM. & MOVING CONTACT:
Copper alloy w/GOLD plate over Nickel plate
6. ELECTRICAL LIFE: 50,000 make-and-break cycles at full load.
7. INSULATION RESISTANCE: 1000M ohm min.
8. DIELECTRIC STRENGTH: 1000V RMS min. @sea level.
9. OPERATING TEMP.: -30°C to +85°C



D	15423	CORRECT DESCRIPTION	10/20/05	PH
C	13700	CORRECTED ACTUATOR	1/12/04	AR
B	12045	REVISED AND REDRAWN	4/8/02	CB
REV.	ECN No.	DESCRIPTION	DATE	CHKD

TITLE				
100 SP-3 T2 B4 V22 R E (GOLD CONTACTS)				
SCALE	DATE	DR	DWG	REV
2:1	4/8/02	CB	T110012	D

E-SWITCH®

THE INFORMATION CONTAINED IN THIS DOCUMENT IS PROPRIETARY TO E-SWITCH AND IS NOT TO BE COPIED OR TRANSMITTED