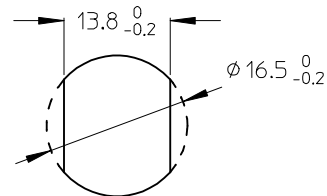


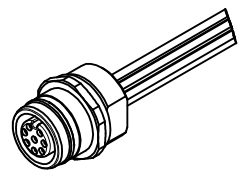
Wiring Diagram:

- 1 - WHITE / weiß
- 2 - BROWN / braun
- 3 - GREEN / grün
- 4 - YELLOW / gelb
- 5 - GREY / grau
- 6 - PINK / rosa
- 7 - BLUE / blau
- 8 - RED / rot



ITEM	COMPONENT	MATERIAL	FINISH
1	REC SHELL	BRASS	NICKEL PLATED
2	INSERT	PUR	BLACK
3	CONTACT	BRASS / GOLD	CuZn Ni/ Au
4	WIRES	COPPER/PVC	NONE
5	O-RING	NBR	BLACK
6	O-RING	VITON	RED
7	POTTING MATERIAL	WEVO	NONE

POL	MATERIAL NO.	ENGINEERING NO.	FINISHED LENGTH
8	1200845095	WR8U20E02C300	300 ±10
8	1200845002	WR8U20E02M010	1000 ±10



VOLTAGE RATING: 30 VAC / 36 VDC
 AMPERAGE RATING: 2 A
 PROTECTION CLASS: IP 67/68/69K
 OPERATING TEMPERATURE: -25°C / 90°C
 UL CERTIFICATION: FILE NO. E152210
 CSA CERTIFICATIONS: FILE NO. LR6837

ENTER DESCRIPTION EC NO: IPGZ014-0351 DRW:BBRAUCH 2013/09/26 CHKD:APOHL 2013/10/16 APPR:CBURGER 2014/01/31	QUALITY SYMBOLS	GENERAL TOLERANCES (UNLESS SPECIFIED)		DIMENSION STYLE MM ONLY		SCALE 2:1	DESIGN UNITS METRIC	THIRD ANGLE PROJECTION
	▽=0	mm	INCH	DRAWN BY NSTAUDIGEL	DATE 2010/01/28	TITLE REC U12 8P AC FE STR PUR XM M16 FM WIR SE UNSH BRA AU		
	□=0	4 PLACES ±---	±---	CHECKED BY	DATE	molex DOCUMENT NO. SD-120084-019 SHEET NO. 1 OF 1		
		2 PLACES ±0.05	±---	APPROVED BY FPACHER	DATE 2010/02/01			
	1 PLACE ±0.1	±---	MATERIAL NO.		see table THIS DRAWING CONTAINS INFORMATION THAT IS PROPRIETARY TO MOLEX INCORPORATED AND SHOULD NOT BE USED WITHOUT WRITTEN PERMISSION			
	0 PLACE ±0.2	±---	ANGULAR ± 1 °					
	DRAFT WHERE APPLICABLE MUST REMAIN WITHIN DIMENSIONS		SIZE A3					