

| PART NUMBER | LED COLOR | | | | LED SPEC. CHART. |
|---------------|--------------|--------------|--------------|--------------|------------------|
| | POSITION 1 | POSITION 2 | POSITION 3 | POSITION 4 | |
| 569-0101-111 | RED | RED | RED | RED | 1 |
| 569-0101-212 | RED | GREEN | RED | GREEN | 1 |
| 569-0101-232 | RED | GREEN | YELLOW | GREEN | 1 |
| 569-0101-237 | RED | GREEN | YELLOW | ORANGE | 1 |
| 569-0101-732 | RED | ORANGE | YELLOW | GREEN | 1 |
| 569-0102-222 | GREEN | GREEN | GREEN | GREEN | 1 |
| 569-0102-232 | GREEN | GREEN | YELLOW | GREEN | 1 |
| 569-0102-233 | GREEN | GREEN | YELLOW | YELLOW | 1 |
| 569-0102-237 | GREEN | GREEN | YELLOW | ORANGE | 1 |
| 569-0103-222 | YELLOW | GREEN | GREEN | GREEN | 1 |
| 569-0103-237 | YELLOW | GREEN | YELLOW | ORANGE | 1 |
| 569-0103-323 | GREEN | YELLOW | GREEN | YELLOW | 1 |
| 569-0103-333 | YELLOW | YELLOW | YELLOW | YELLOW | 1 |
| 569-0107-777 | ORANGE | ORANGE | ORANGE | ORANGE | 1 |
| *569-0109-999 | BLUE | BLUE | BLUE | BLUE | 1 |
| 569-0201-111 | RED | RED | RED | RED | 2 |
| 569-0202-222 | GREEN | GREEN | GREEN | GREEN | 2 |
| 569-0202-233 | GREEN | GREEN | YELLOW | YELLOW | 2 |
| 569-0203-333 | YELLOW | YELLOW | YELLOW | YELLOW | 2 |
| 569-0301-111 | RED | RED | RED | RED | 3 |
| 569-0302-222 | GREEN | GREEN | GREEN | GREEN | 3 |
| 569-0302-233 | GREEN | GREEN | YELLOW | YELLOW | 3 |
| 569-0303-333 | YELLOW | YELLOW | YELLOW | YELLOW | 3 |
| 569-0701-111 | RED/GREEN | RED/GREEN | RED/GREEN | RED/GREEN | 4 |
| 569-0701-144 | RED/GREEN | RED/GREEN | YELLOW/GREEN | YELLOW/GREEN | 4 |
| 569-0704-411 | YELLOW/GREEN | YELLOW/GREEN | RED/GREEN | RED/GREEN | 4 |
| 569-0704-444 | YELLOW/GREEN | YELLOW/GREEN | YELLOW/GREEN | YELLOW/GREEN | 4 |

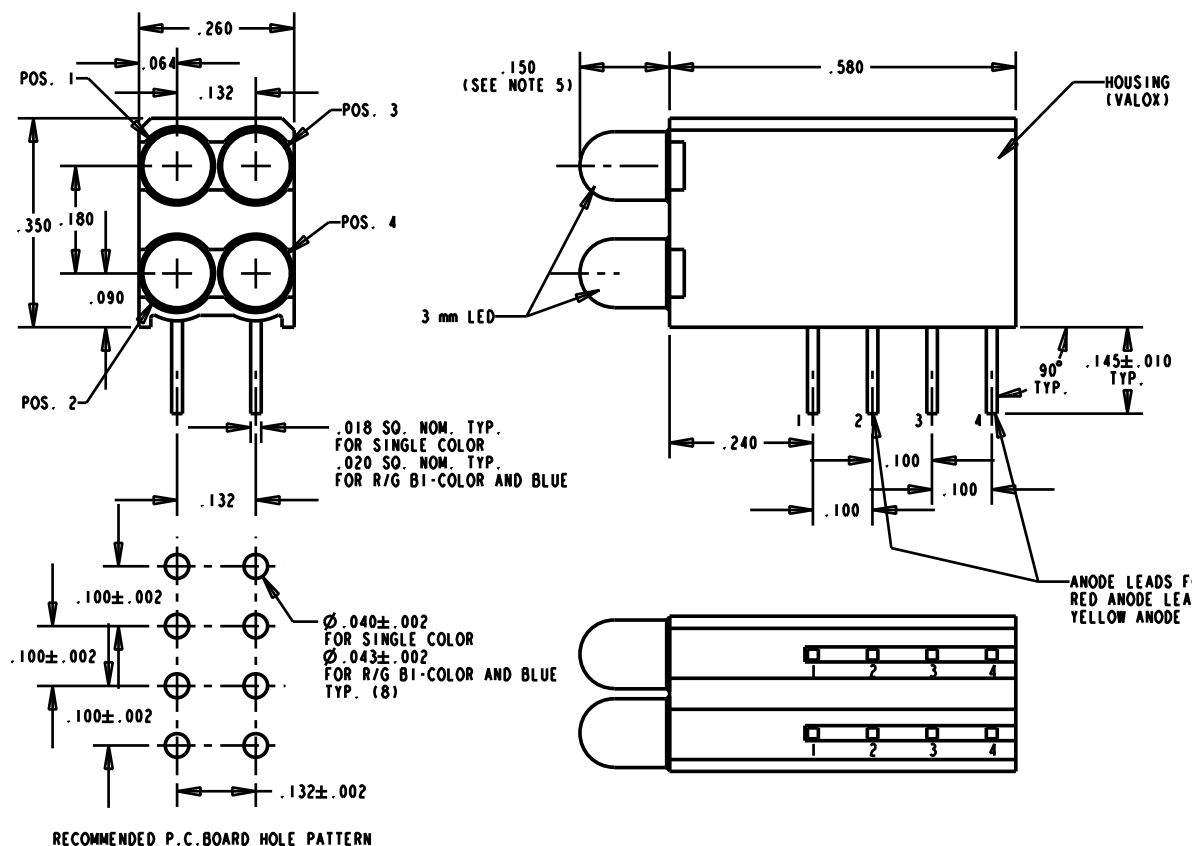
| OPERATING CHARACTERISTICS AT 25°C AMBIENT | | | | | | |
|---|--------|-----|------|------|-------|------------------------|
| CHARACTERISTICS | COLOR | MIN | TYP | MAX | UNITS | TEST CONDITIONS |
| LUMINOUS INTENSITY | RED | 7.4 | 10.0 | | mcd | I _r = 10 mA |
| | YELLOW | 7.4 | 10.0 | | | |
| | GREEN | 4.7 | 12.6 | | | |
| | ORANGE | 3.4 | 7.0 | | | |
| | BLUE | 7.1 | 12.5 | 18.0 | | |
| FORWARD VOLTAGE | RED | | 2.0 | 2.8 | V | I _r = 20 mA |
| | YELLOW | | 2.1 | 2.8 | | |
| | GREEN | | 2.1 | 2.8 | | |
| | ORANGE | 1.5 | 2.2 | 3.0 | | |
| REVERSE VOLTAGE | RED | 5 | | | V | I _r = 10 mA |
| | YELLOW | 5 | | | | |
| | GREEN | 5 | | | | |
| | ORANGE | 5 | | | | |
| PEAK WAVELENGTH | RED | | 635 | | nm | MEASURED AT PEAK |
| | YELLOW | | 585 | | | |
| | GREEN | | 565 | | | |
| | ORANGE | | 600 | | | |
| | BLUE | | 428 | | | |
| VIEWING ANGLE 2° 1/2 | RED | | 60 | | DEG. | |
| | YELLOW | | 60 | | | |
| | GREEN | | 60 | | | |
| | ORANGE | | 60 | | | |
| | BLUE | | 70 | | | |



CHART 1

SEE NOTE 4

- NOTE:
- LED LEAD SPACING MEASURED AT HOUSING EXIT.
 - PIN NUMBERS FOR REFERENCE ONLY, DESIGNATION NON-EXISTENT ON PARTS.
 - DIALIGHT PART NUMBER: 569-0101-111, 569-0102-222, 569-0103-333, 569-0107-777
 - ATTENTION: OBSERVE PRECAUTIONS FOR HANDLING ELECTROSTATIC SENSITIVE DEVICES.
 - P/N: 569-0109-999: DIMENSION FOR LED PROTRUSION FROM HOUSING IS .156.



| OPERATING CHARACTERISTICS AT 25°C AMBIENT | | | | | | |
|---|--------|-----|-----|-----|-------|------------------------|
| CHARACTERISTICS | COLOR | MIN | TYP | MAX | UNITS | TEST CONDITIONS |
| LUMINOUS INTENSITY | RED | 1.0 | 1.6 | | mcd | I _r = 2 mA |
| | YELLOW | 1.0 | 1.6 | | | |
| | GREEN | 1.0 | 1.6 | | | |
| FORWARD VOLTAGE | RED | | 1.7 | 2.2 | V | I _r = 2 mA |
| | YELLOW | | 1.8 | 2.2 | | |
| | GREEN | | 1.9 | 2.7 | | |
| REVERSE VOLTAGE | RED | 5 | | | V | I _r = 10 μA |
| | YELLOW | 5 | | | | |
| | GREEN | 5 | | | | |
| PEAK WAVELENGTH | RED | | 635 | | nm | MEASURED AT PEAK |
| | YELLOW | | 583 | | | |
| | GREEN | | 565 | | | |
| | BLUE | | 428 | | | |
| VIEWING ANGLE 2° 1/2 | RED | | 60 | | DEG. | |
| | YELLOW | | 60 | | | |
| | GREEN | | 60 | | | |
| | BLUE | | 70 | | | |



CHART 2

| OPERATING CHARACTERISTICS AT 25°C AMBIENT | | | | | | |
|---|--------|-----|------|------|-------|-------------------------|
| CHARACTERISTICS | COLOR | MIN | TYP | MAX | UNITS | TEST CONDITIONS |
| LUMINOUS INTENSITY | RED | 8.7 | 29.0 | | mcd | V _r = 5 V |
| | YELLOW | 3.7 | 12.6 | | | |
| | GREEN | 5.6 | 19.0 | | | |
| FORWARD VOLTAGE | RED | | 10.0 | 15.0 | V | V _r = 5 V |
| | YELLOW | | 10.0 | 15.0 | | |
| | GREEN | | 12.0 | 15.0 | | |
| REVERSE VOLTAGE | RED | 5 | | | V | I _r = 100 μA |
| | YELLOW | 5 | | | | |
| | GREEN | 5 | | | | |
| PEAK WAVELENGTH | RED | | 635 | | nm | MEASURED AT PEAK |
| | YELLOW | | 585 | | | |
| | GREEN | | 565 | | | |
| | BLUE | | 428 | | | |
| VIEWING ANGLE 2° 1/2 | RED | | 60 | | DEG. | |
| | YELLOW | | 60 | | | |
| | GREEN | | 60 | | | |
| | BLUE | | 70 | | | |



CHART 3
INTEGRAL RESISTOR, 5V LED

| YELLOW/GREEN BI-COLOR LEDS | | | | | | |
|---|--------|-----|-----|-----|-------|------------------------|
| OPERATING CHARACTERISTICS AT 25°C AMBIENT | | | | | | |
| CHARACTERISTICS | COLOR | MIN | TYP | MAX | UNITS | TEST CONDITIONS |
| LUMINOUS INTENSITY | YELLOW | 2.5 | 4.3 | | mcd | I _r = 10 mA |
| | GREEN | 2.5 | 6.3 | | | |
| FORWARD VOLTAGE | YELLOW | | 2.1 | 2.8 | V | I _r = 20 mA |
| | GREEN | | 2.1 | 2.8 | | |
| PEAK WAVELENGTH | YELLOW | | 635 | | nm | MEASURED AT PEAK |
| | GREEN | | 565 | | | |
| VIEWING ANGLE 2° 1/2 | RED | | 80 | | DEG. | |
| | YELLOW | | 80 | | | |
| | GREEN | | 80 | | | |

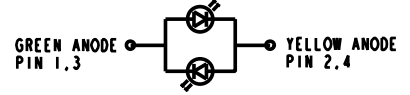
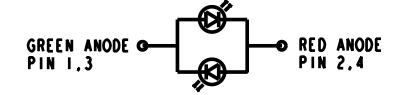


CHART 4

| RED/GREEN BI-COLOR LEDS | | | | | | |
|---|-------|-----|------|-----|-------|-------------------------|
| OPERATING CHARACTERISTICS AT 25°C AMBIENT | | | | | | |
| CHARACTERISTICS | COLOR | MIN | TYP | MAX | UNITS | TEST CONDITIONS |
| LUMINOUS INTENSITY | RED | 1.7 | 4.7 | | mcd | I _r = 20 mA |
| | GREEN | 3.7 | 10.0 | | | |
| FORWARD VOLTAGE | RED | | 2.0 | 2.8 | V | I _r = 20 mA |
| | GREEN | | 2.1 | 2.8 | | |
| PEAK WAVELENGTH | RED | | 635 | | nm | MEASURED AT PEAK |
| | GREEN | | 565 | | | |
| REVERSE VOLTAGE | RED | 5 | | | V | I _r = 100 μA |
| | GREEN | 5 | | | | |
| VIEWING ANGLE 2° 1/2 | RED | | 60 | | DEG. | |
| | GREEN | | 60 | | | |



THIS DRAWING AND THE CONTENTS HEREIN ARE CONFIDENTIAL AND THE SOLE PROPERTY OF DIALIGHT. REPRODUCTION OF THIS DRAWING OR CONSTRUCTION OF ANY PARTS WITHIN THIS DRAWING ARE FORBIDDEN WITHOUT THE WRITTEN CONSENT OF DIALIGHT.

SCALE 5:1

ALL DIM'S IN: INCHES

TOLERANCES: UNLESS OTHERWISE SPECIFIED

FRACTIONS: ±1/64

DECIMALS (1.XX): ±.02

DECIMALS (1.XXX): ±.015

ANGLES: ±1°

FINISH:

FSCN 83330

DRAWING NUMBER: C-16022

REV: F

TITLE: BI-LEVEL CBI

MATERIAL:

Dialight

1501 ROUTE 34 SOUTH FARMINGDALE, NJ 07727

SHEET OF FAMILY TABLES: