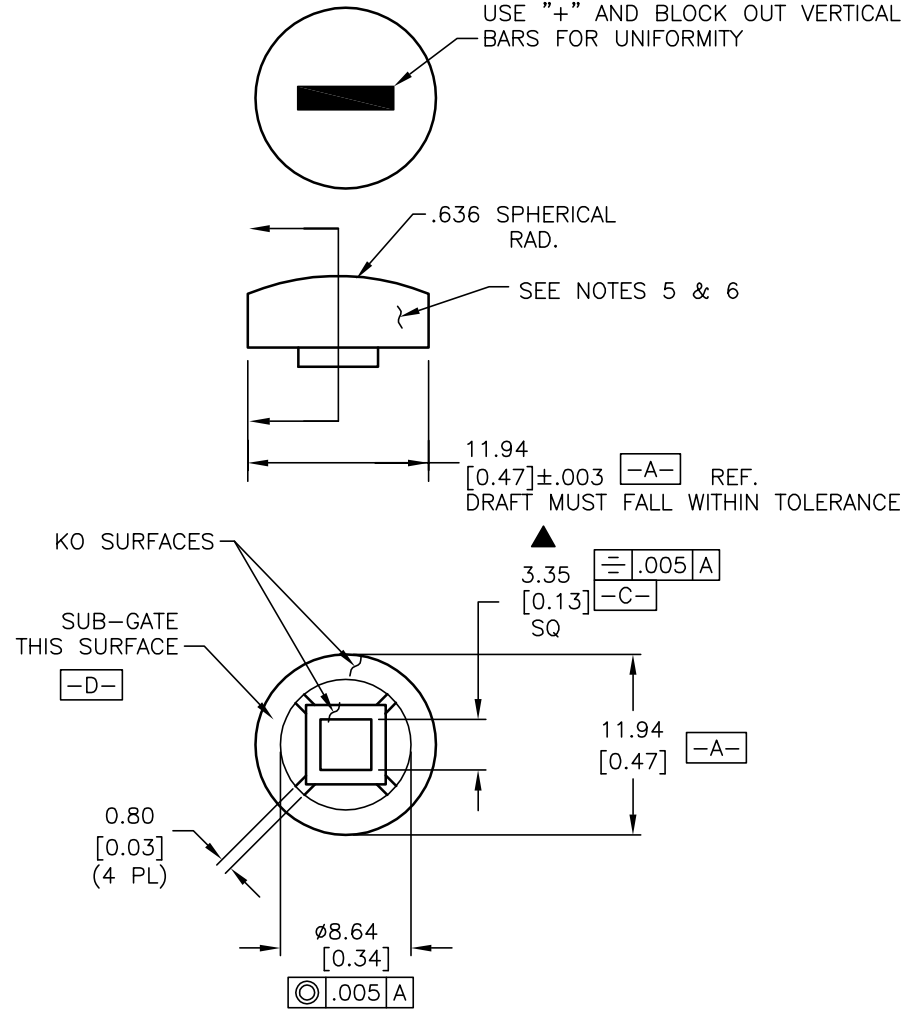


TEXT: ARIAL BOLD 36 POINT
 COLOR: BLACK
 USE "+" AND BLOCK OUT VERTICAL
 BARS FOR UNIFORMITY



NOTES:

1. ALL DIMENSIONS IN MM [INCH]
2. GENERAL TOLERANCE: X.XX=±0.10
X.X=±0.4
- ▲ 3. USES CAP B099401
4. MATERIAL: ABS
- ▲ COLOR WHITE
5. EXTERNAL SURFACES TO BE FREE OF SINK MARKS & BLEMISHES
6. SURFACE FINISH: FINE EDM MACHINE FINISH
7. GRAPHICS TO BE CENTERED ON BUTTON WITHIN ±.010 TO THE 11.94 DIMENSION.
8. ▲ DENOTES CRITICAL PARAMETER.

E-SWITCH®

B	14148	REMOVE DETIAL	7/6/04	AR
A	13555	RELEASED FOR PRODUCTION	10/27/03	AR
REV.	ECN No.	DESCRIPTION	DATE	CHKD

TITLE				
320.08WHTBLK"-"				
SCALE	DATE	DR	DWG	REV
2:1	10/27/03	AR	B099601	B

THE INFORMATION CONTAINED IN THIS DOCUMENT IS PROPRIETARY TO E-SWITCH AND IS NOT TO BE COPIED OR TRANSFERRED