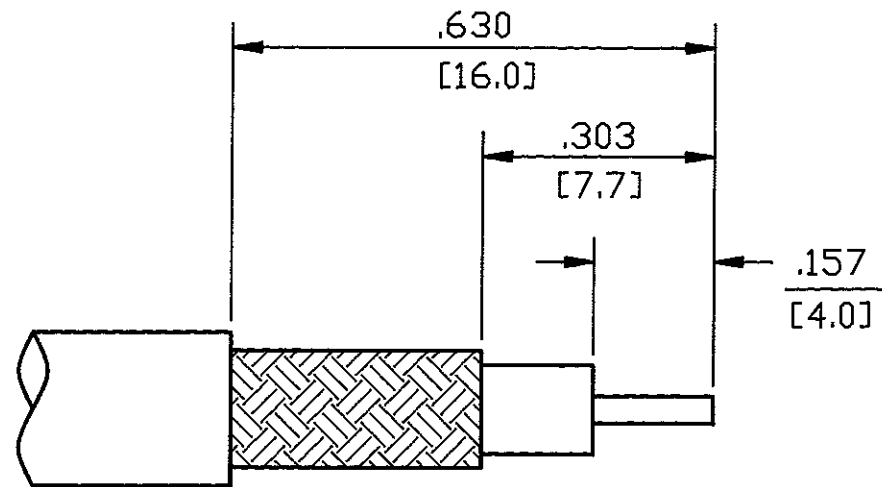
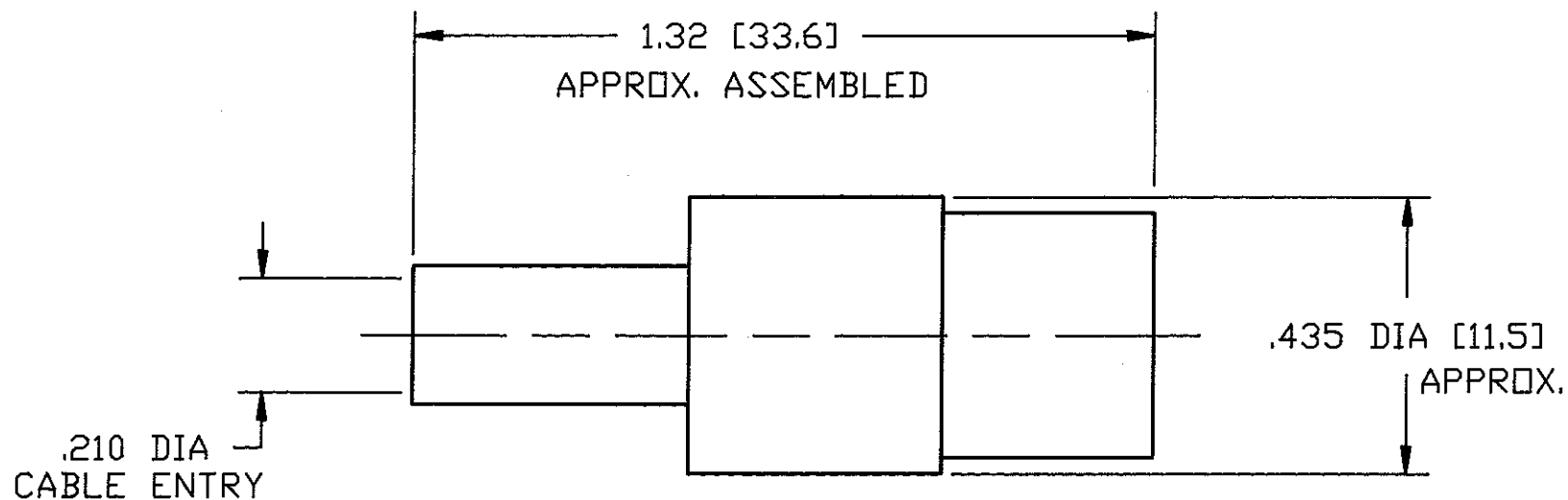


DO NOT SCALE THIS DRAWING



RECOMMENDED CABLE STRIPPING DIM'S

36800-RFX		REVISIONS			
DRAWING NUMBER	SYM	DESCRIPTION	DATE	E.C.O. NO.	APPR.
	A	OFFICIAL ENG. RELEASE TO MFG.	10/2/91	38063	DR
	B	.210 CABLE DIM WAS .220	8/28/92	39125	DR



NOTES:

- BRASS BODY, NICKEL PLATED.
- DELTRIN INSULATOR.
- GOLD PLATED, PHOSPHOR BRONZE CONTACT, .000003.
- PACKAGE IN BAG #999-327.
- USE AMPHENOL CRIMP TOOL #CTL-1
- NON-CAPTIVATED CONTACT, .043 WIRE ENTRY.
- 3 PC. (BODY, FERRULE, CONTACT).

ENGLISH [METRIC]

H:\DEPT611\BNC\000\ASSY\36800RFX

PART NO.	QUAN	UOM	ITEM LINE NO	DESCRIPTION	CODE	FINISH
LIST OF MATERIAL						

REMOVE ALL BURRS, BREAK CORNERS AND SHARP EDGES .005 MAXIMUM UNLESS OTHERWISE SPECIFIED.

NOTICE — These drawings, specifications, or other data (1) are, and remain the property of Amphenol Corp. (2) must be returned upon request; and (3) are confidential and are not to be disclosed to any person other than those to whom they are given by Amphenol Corp. The furnishing of these drawings, specifications, or other data by Amphenol Corp., or by any other person to anyone for any purpose is not to be regarded by implication or otherwise as in any manner licensing, granting rights or permitting such holder or any other person to manufacture, use or sell any product, process or design, patented or otherwise, that may in any way be related to or disclosed by said drawings, specifications or other data.

NEXT ASSY	USED ON	UNLESS OTHERWISE SPECIFIED DIMENSIONS ARE IN INCHES. TOLERANCES NOT OTHERWISE SPECIFIED ARE: 2 PLACE DECIMAL ±.015 (0,381 mm) 3 PLACE DECIMAL ±.005 (0,127 mm) ANGLES ± 1°	DRAWN BY TERRI ALBERA	DATE 4-19-91	TITLE BNC CRIMP CRIMP JACK FOR RG-58, 141, 142A CABLE 50 OHM	Amphenol Corporation RF/Microwave Operations Danbury, Conn. U.S.A.
MATERIAL	SPECIFICATION		CHECKED D. ROYCE	DATE 9/13/91		
FINISH	REFERENCE DRAWING NO. EAR 962370	ENGINEER D.ROYCE	DATE 9/13/91			
		QUALITY ASSURANCE Z KAMINSKI	DATE 9/17/91			
			MFG. ENG. IT PROD UNIT	DATE 9/18/91	CODE IDENTIFICATION 74868	DRAWING SIZE B
					DRAWING NO. 36800-RFX	ISSUE B