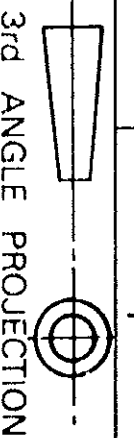
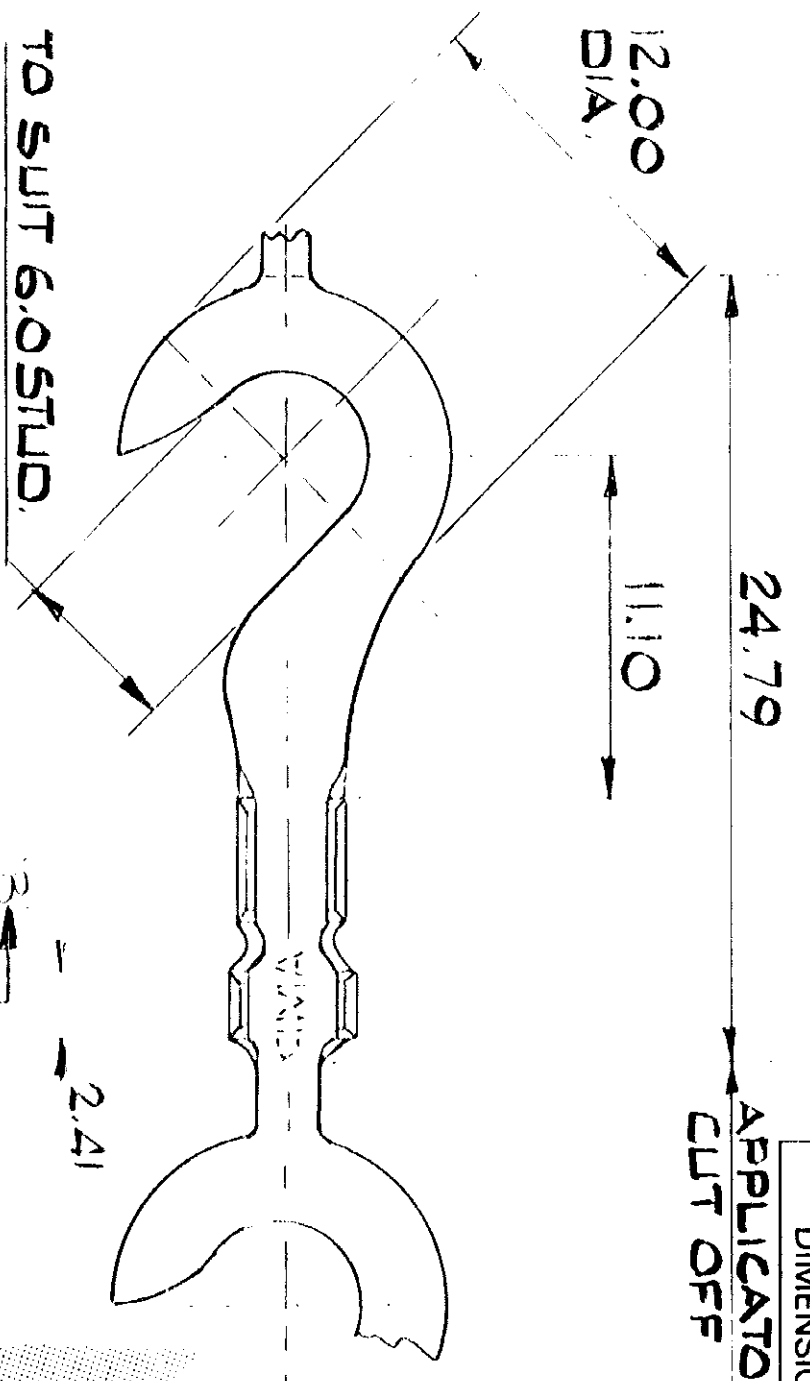


**DO NOT SCALE**  
DIMENSIONS IN m.m.

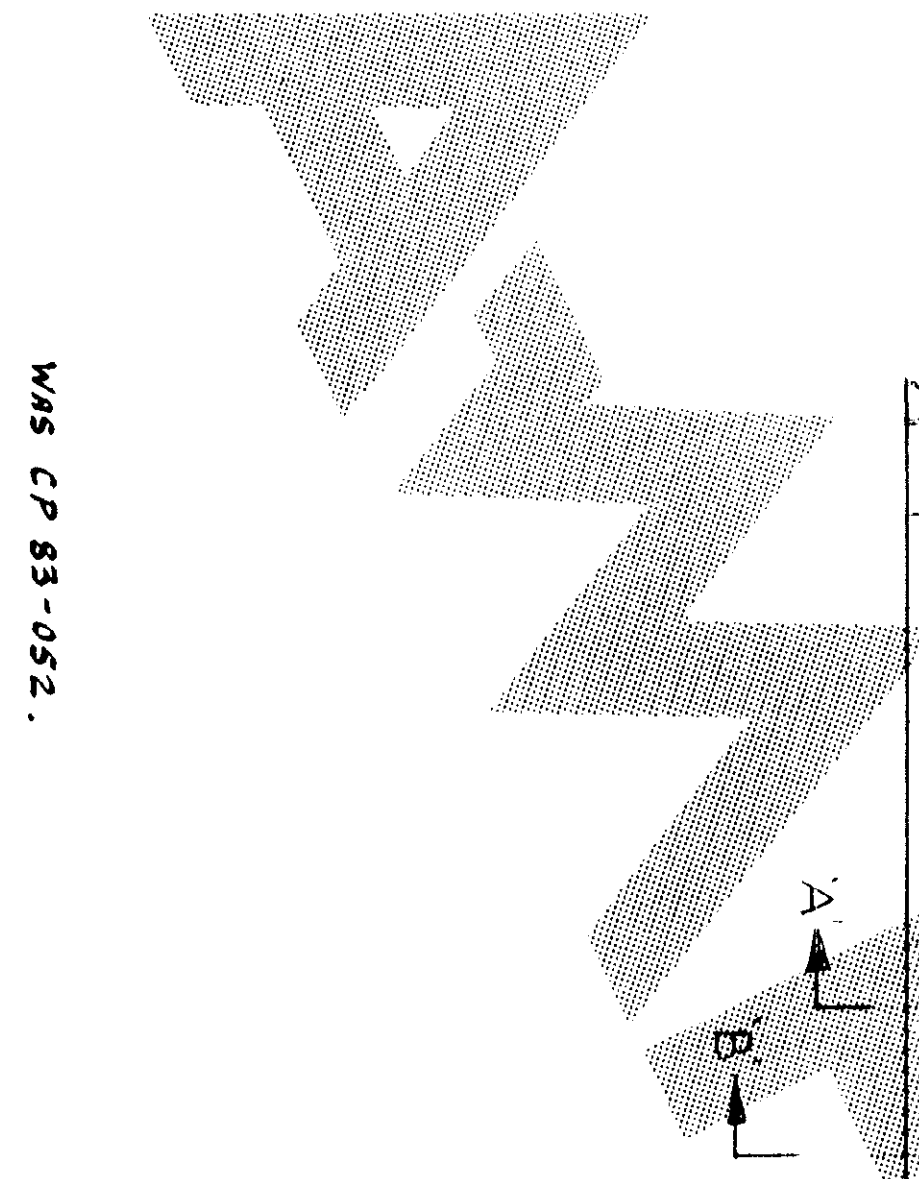
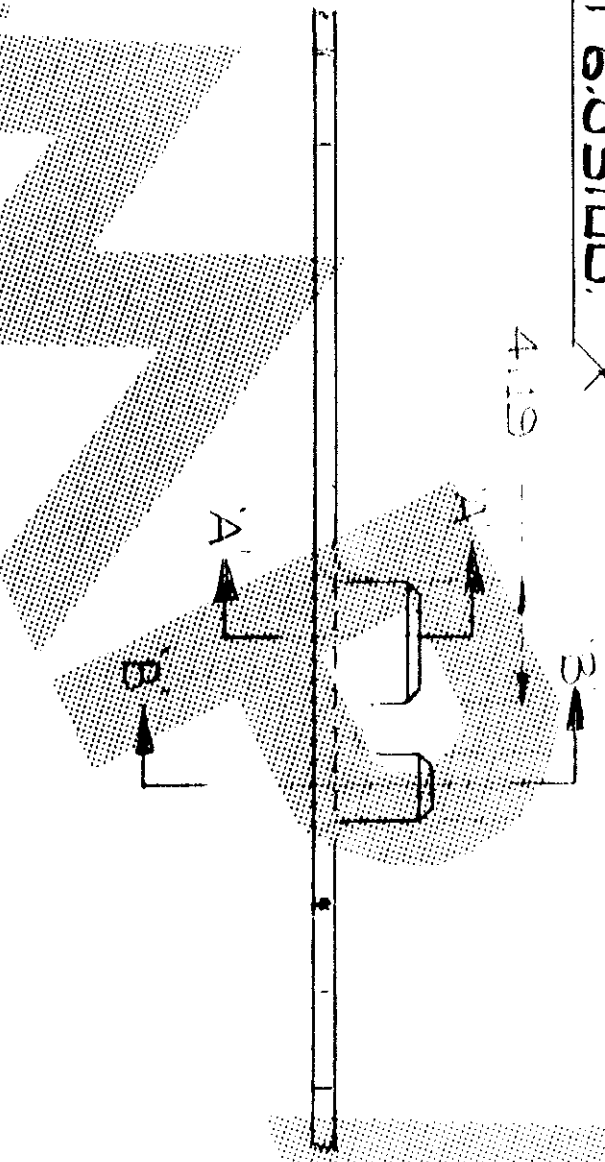
**METRIC**



APPLICATOR,  
CUT OFF



SECTION B-B



WAS CP 83-052.

OTHER TREATMENT	ELECTRO FINNED		FINISH	BRASS	MATERIAL	PART NUMBER	342781-2
CUSTOMER DWG	NONE		FINISH	BRASS	MATERIAL	PART NUMBER	342781-1
FOR REFERENCE ONLY	THIS DRAWING IS UNPUBLISHED. BY AMP OF GREAT BRITAIN LTD. ALL INTERNATIONAL RIGHTS RESERVED. AMP PRODUCTS MAY BE COVERED BY BRITISH AND FOREIGN PATENTS AND/OR PATENTS PENDING.						
TOLERANCES UNLESS OTHERWISE STATED:-	INS DIA. RANGE		WIRE RANGE		SCALE		
DEC ± 0.5	1.52 TO 3.05		22-10		4.1		
ANGLES ± 1°	DR. J. CREW 3/2/84 CHK. A. HOWARD 10-2-84 APP. [Signature]						
4 - 2 OBSOLETE	ABH/CS064	DR. J. CREW 3/2/84	NAME		HOOK TONGUE TERMINAL		
0 - FOR PRODUCTION	DM/25784	CHK. A. HOWARD 10-2-84	Of Great Britain Ltd		AMP TERMINAL HOUSE STANMORE MIDDX.		
ISS REVISION RECORD	DR	DATE	APP	LOC	DWG. NO.	SHEET	
				A3	C 342781	1 of 1	

8 7 6 5 4 3 2 1