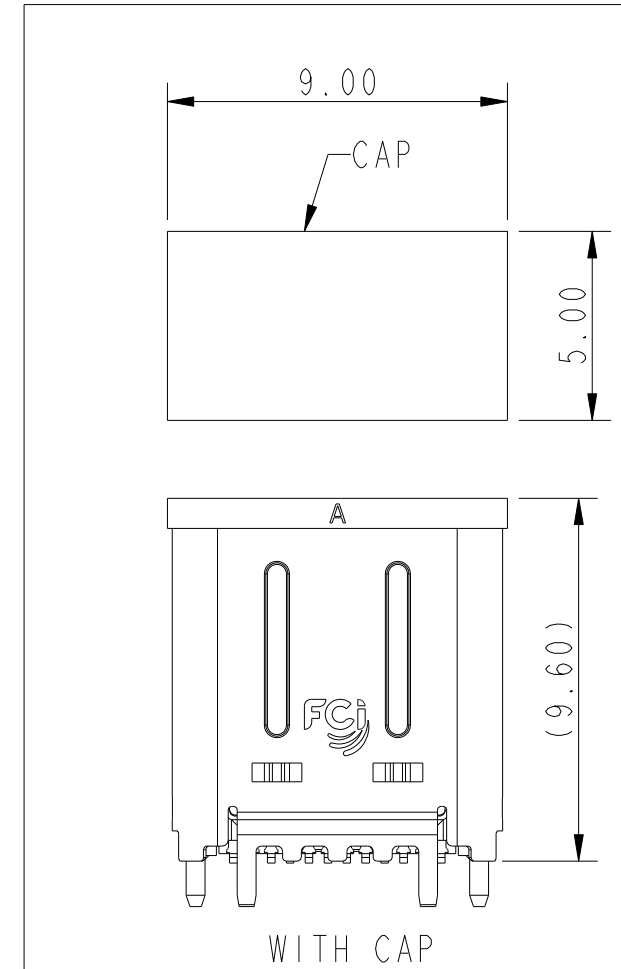
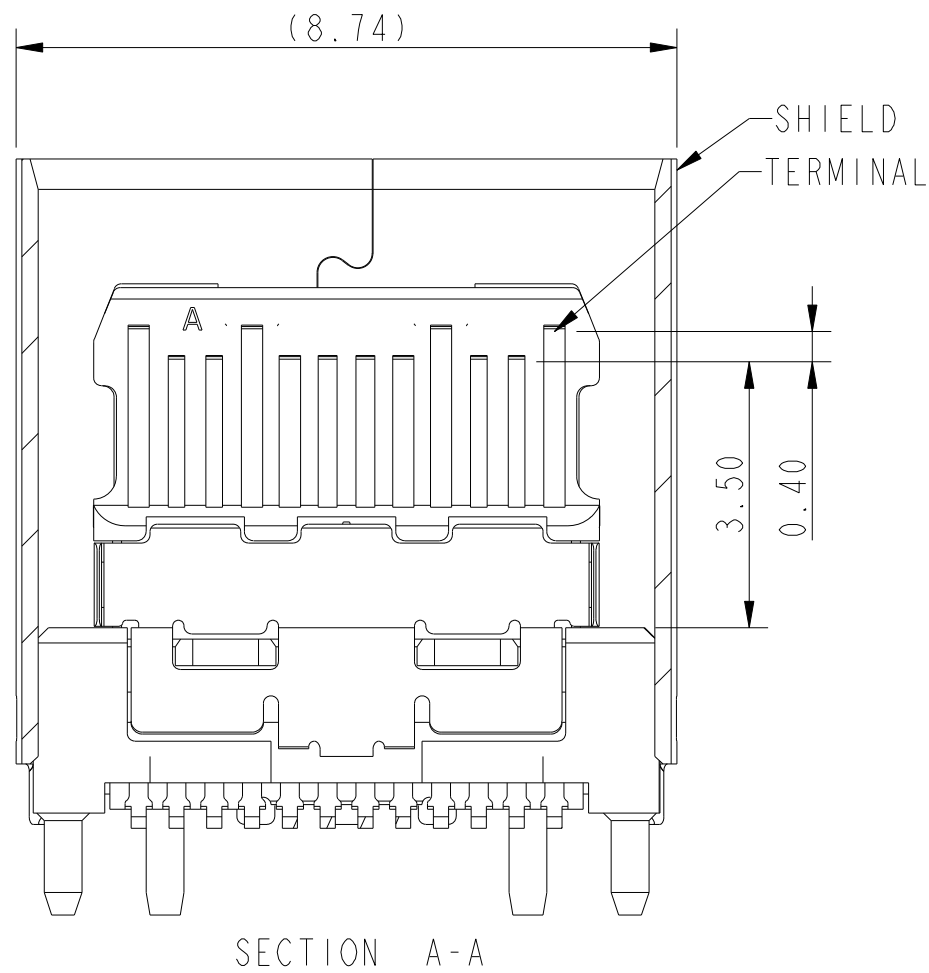
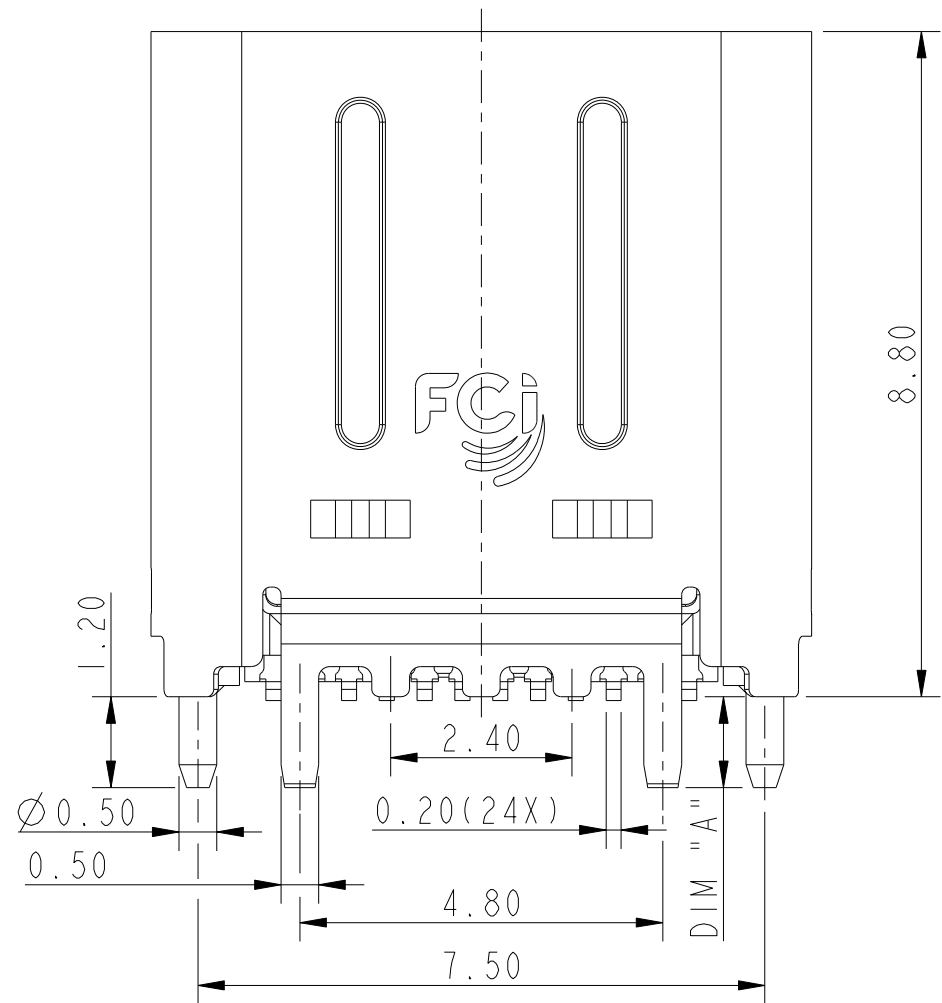
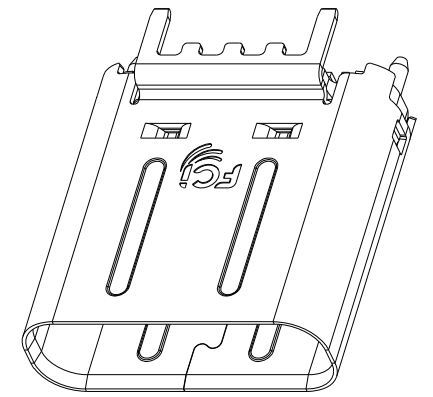
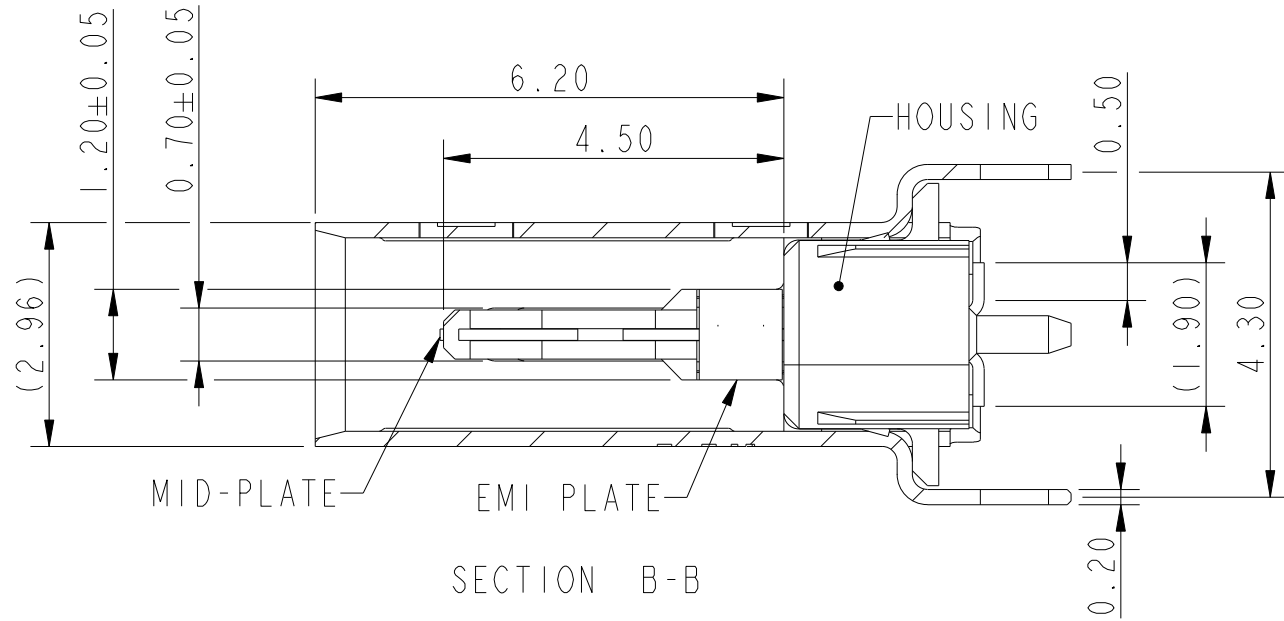
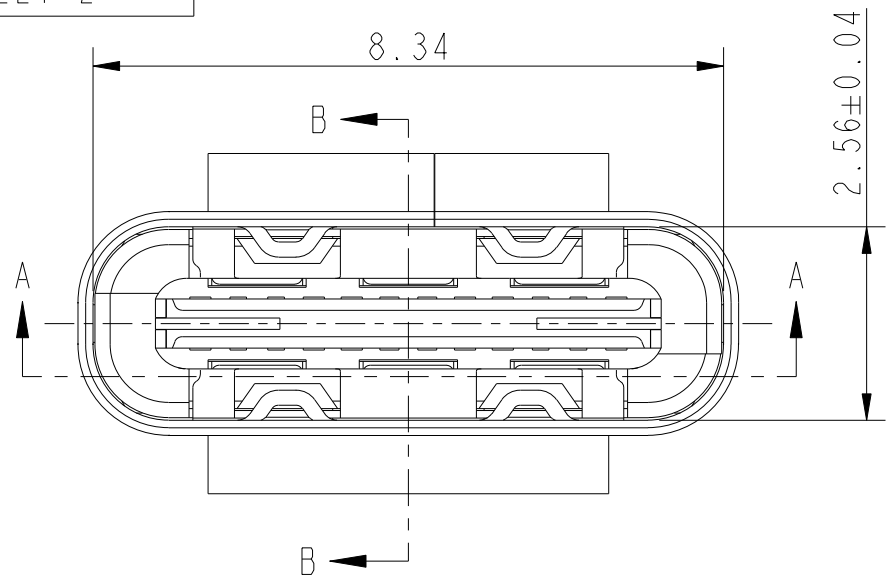


PART NUMBER
SEE SHEET 2



spec ref	-	dr	Li-Qing Lei	2014/11/20	projection	mm	size	A3	scale	10:1
tolerance std	ISO 406 ISO 1101	eng	Li-Qing Lei	2017/01/05			ecn no	-	rel level	Released
TOLERANCES UNLESS OTHERWISE SPECIFIED		chr	-	-			product family	-		
surface	linear	0.X	±0.25	Amphenol FCI	title USB3.1 Type-C Vertical, Receptacle		dwg no 10132328	rev A		
		0.XX	±0.15		cat. no.	-		Product - Customer Drw	sheet 1 of 3	
	angular	0°	±2°							

TAPE REEL PACKAGE

Q'TY: (350)EA/REEL

A

B

C

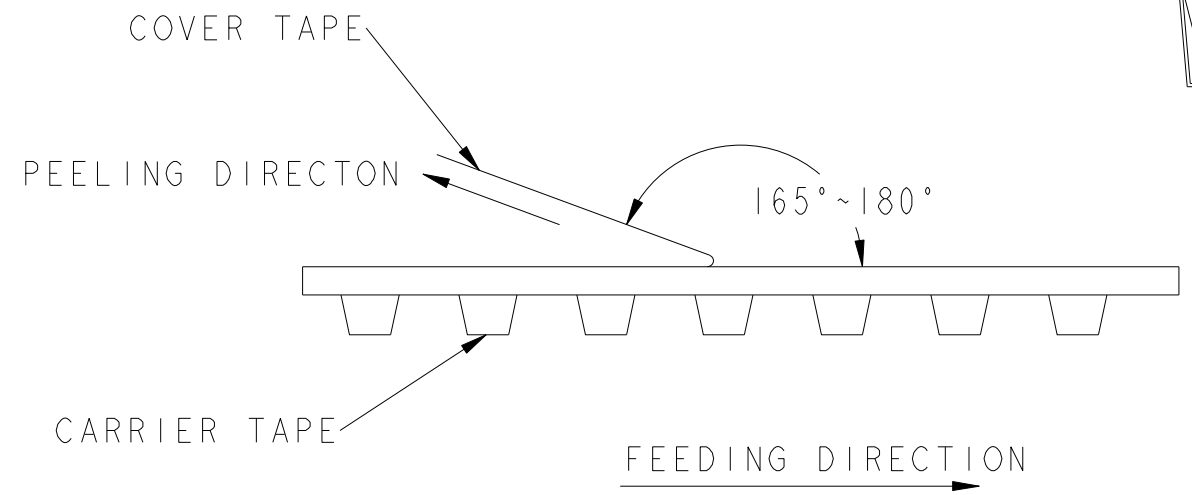
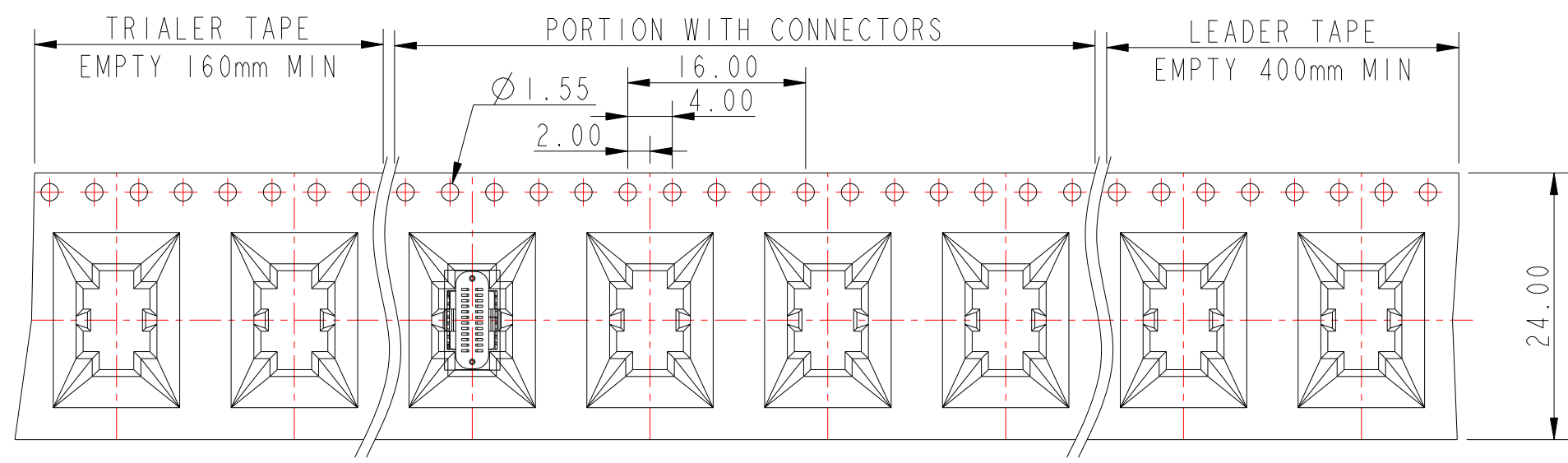
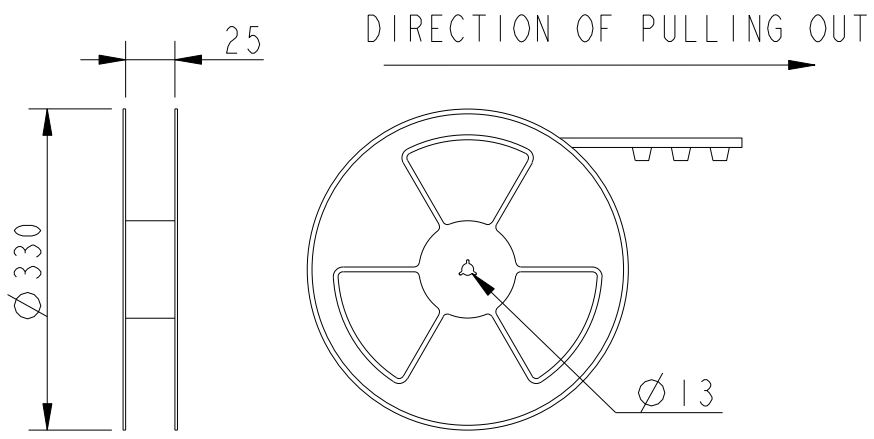
D

A

B

C

D



SHOWS THE METHOD OF COVER TAPE'S PEELING FORCE MEASUREMENT.
PEELING FORCE MUST BE 0.1 TO 1.3N AT THE SPEED OF 300MM/MIN.

Amphenol FCI

© 2016 AFCI

spec ref	-	dr	Li-Qing Lei	2014/11/20	projection	mm	size	A3	scale	1:1	
tolerance std	ISO 406 ISO 1101	eng	Li-Qing Lei	2017/01/05			ecn no	-	rel level		Released
TOLERANCES UNLESS OTHERWISE SPECIFIED		chr	-	-			product family				
surface	linear	0.X	±0.25		title USB3.1 Type-C Vertical, Receptacle		dwg no 10132328	rev A			
		0.XX	±0.15								
		0.XXX	±0.10								
ISO 1302	angular	0°	±2°	cat. no.	Product - Customer Drw		sheet 3 of 3				