

REV.	DESCRIPTION	DATE
A	RELEASE	2014.05.21

RoHS

NOTES:

Insulator Material: Nylon-6T, UL 94V-0

Contact Plating: Flash Gold

Contact Material: Brass

Current Rating : 1A AC,DC

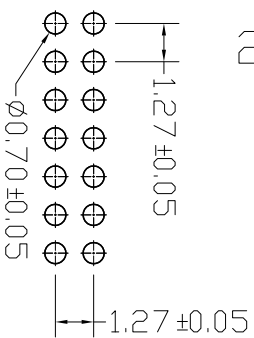
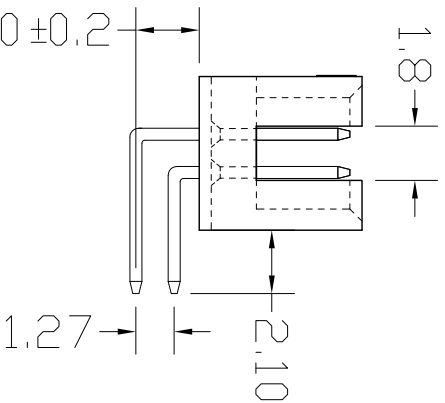
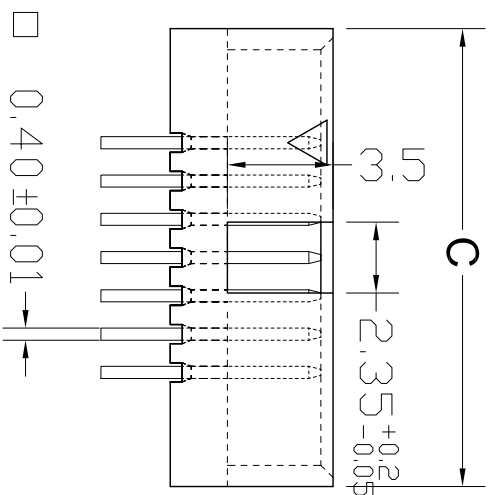
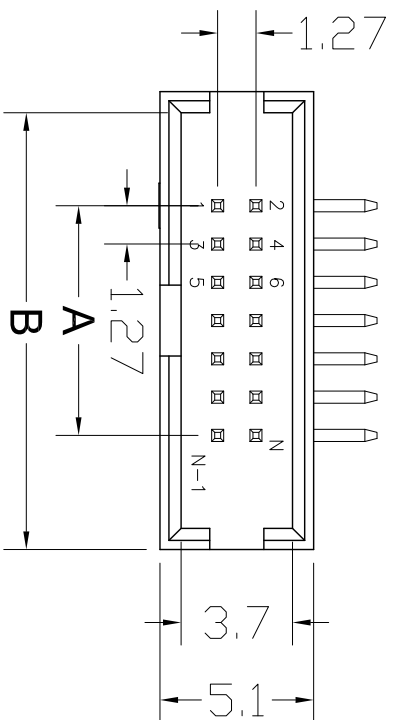
Contact Resistance: 20MΩ Max.

Dielectric Withstanding: AC 500V

Insulator Resistance: 1000MΩ Min.

Operating Temp.: -40°C~+105°C

NUMBER OF POSITIONS	DIMENSIONS		
	A	B	C
10	5.08	11.25	12.65
14	7.62	13.79	15.19
16	8.89	15.06	16.46
20	11.43	17.60	19.00
26	15.24	21.41	22.81
30	17.78	23.95	25.35
34	20.32	26.49	27.89
40	24.13	30.30	31.70
50	30.48	36.65	38.05
60	36.83	43.00	44.40



Recommended PCB Layout

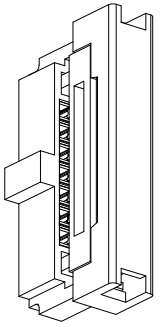
UNLESS TOLERANCE		DRAW BY
GENERAL	ANGLE	DESIGN BY
X ± 0.30	X° ± 3.0°	CHECK BY
.X ± 0.25	.X° ± 2.0°	APPROVE BY
.XX ± 0.20	.XX° ± 1.0°	SCALE
.XXX ± 0.10	.XXX° ± 0.5°	SHEET
		UNIT

Cnc Tech,LLC

Port NO. 3221-XX-0200-00

SCALE 1:1 SHEET 1/1 UNIT MM DRAW NO: REV: A

MATING PART
3230-XX-0103-00



MATING PART
3230-XX-0104-00

