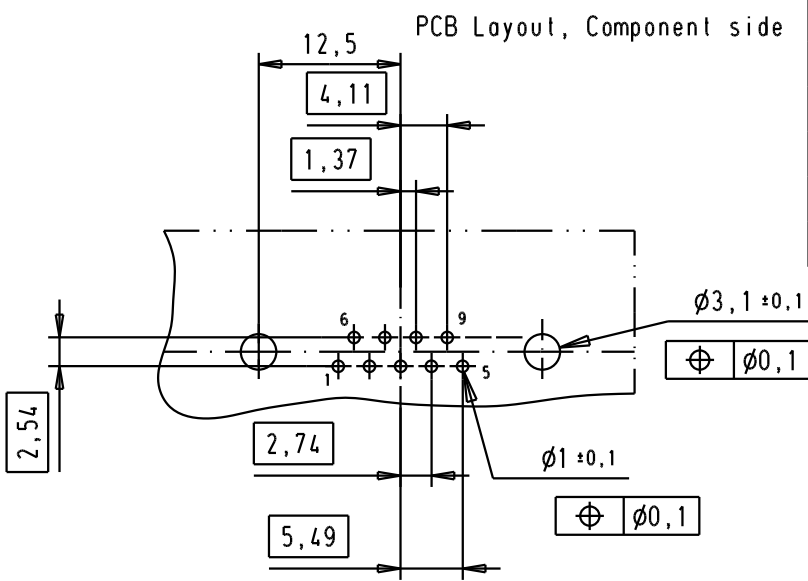
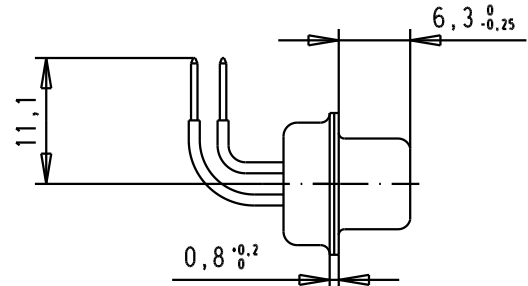
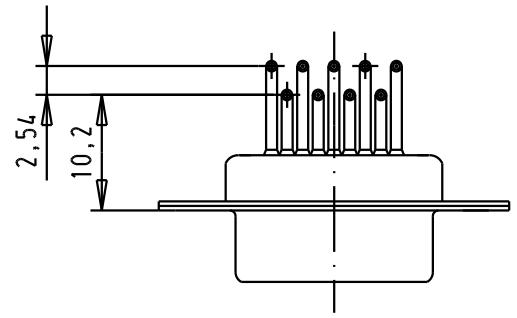
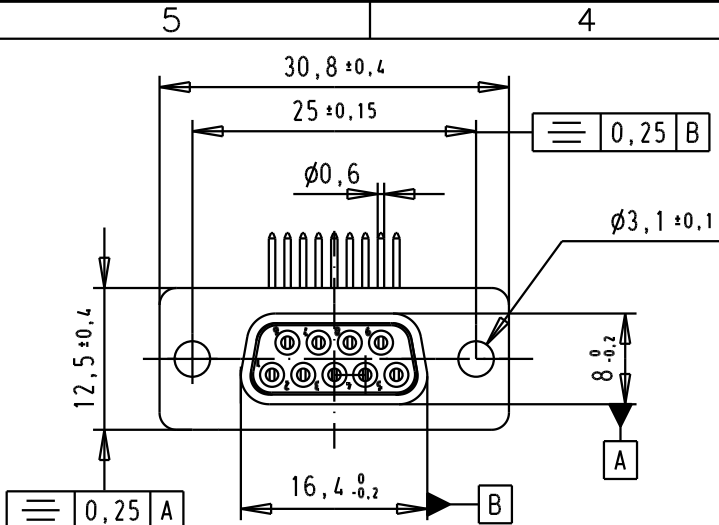


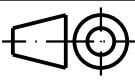

D  
C  
B  
A



SPECIFICATION

Mating Cycles	500
Filter type	C
Capacitance	3900pf ± 20%
Working Voltage	100v
Current Rating	7.5A
Insulation Resistance	>1GΩ

FREQUENCY (MHz)	ATTENUATION (dB)
5	6dB
10	11dB
50	25dB
100	35dB
500	35dB
1000	32dB

				Dat.	Name	 All Dim. in mm Orig. Size DIN A 4
			Detail.	8-JUL-02	CV	
			Insp.			
			Stand.			
32802	11/07/05	JMDR	HARTING EURL F-95972 Paris			
31058	8-JUL-02	CV				
Mod.	Dat.	Name				

D-Sub, female, angled, 9 Poles, with turned solder pin, fixing hole		Meas Lab/ Scale 1.5:1
TB 09641147240		Blatt/ Page 1 / 1
Sub.		