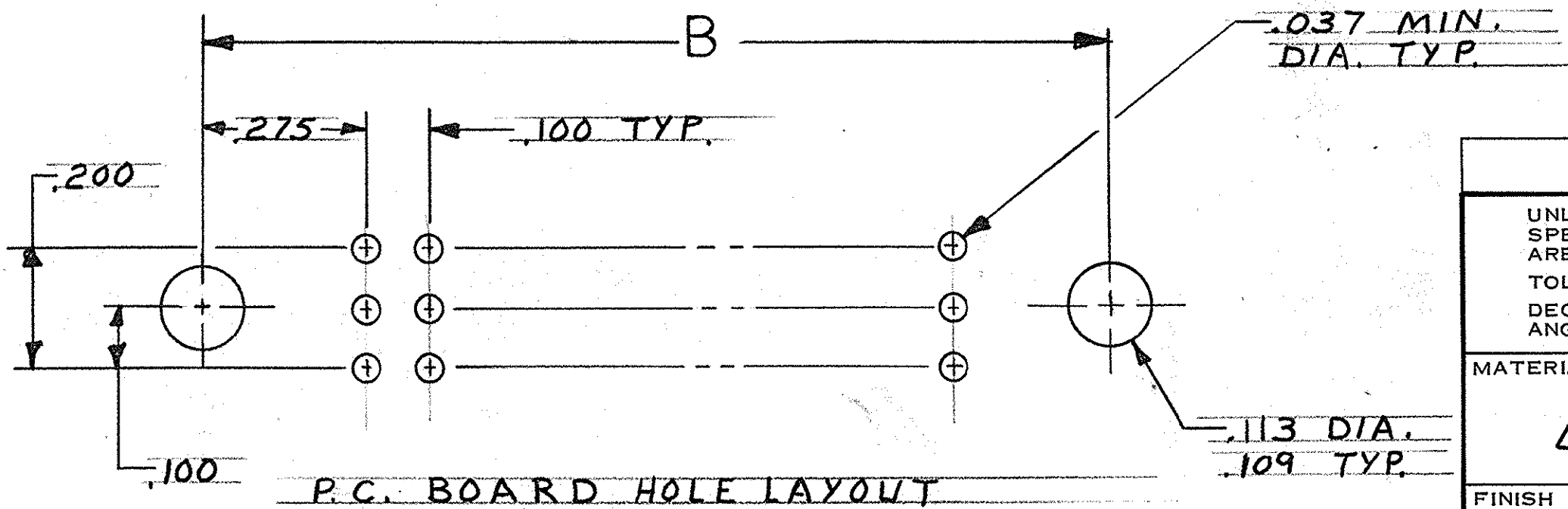
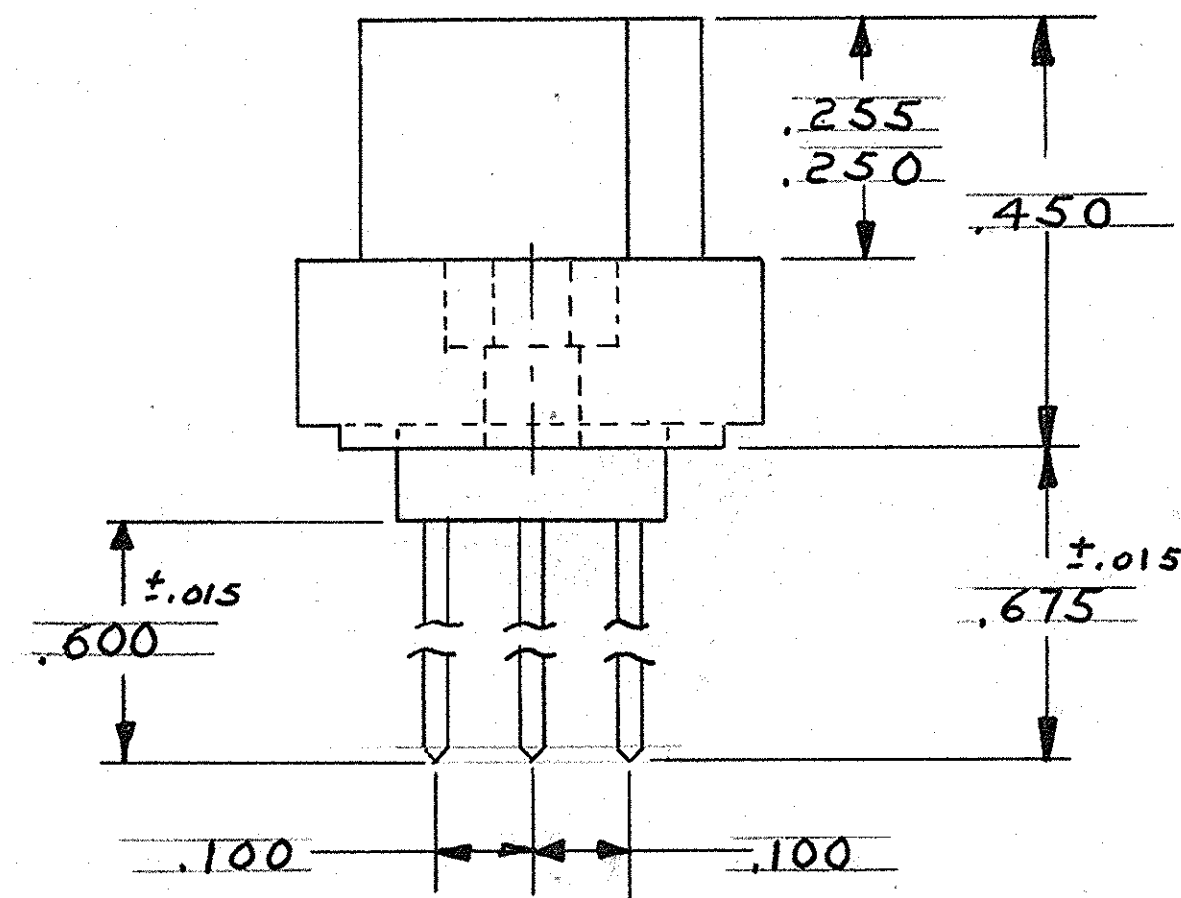
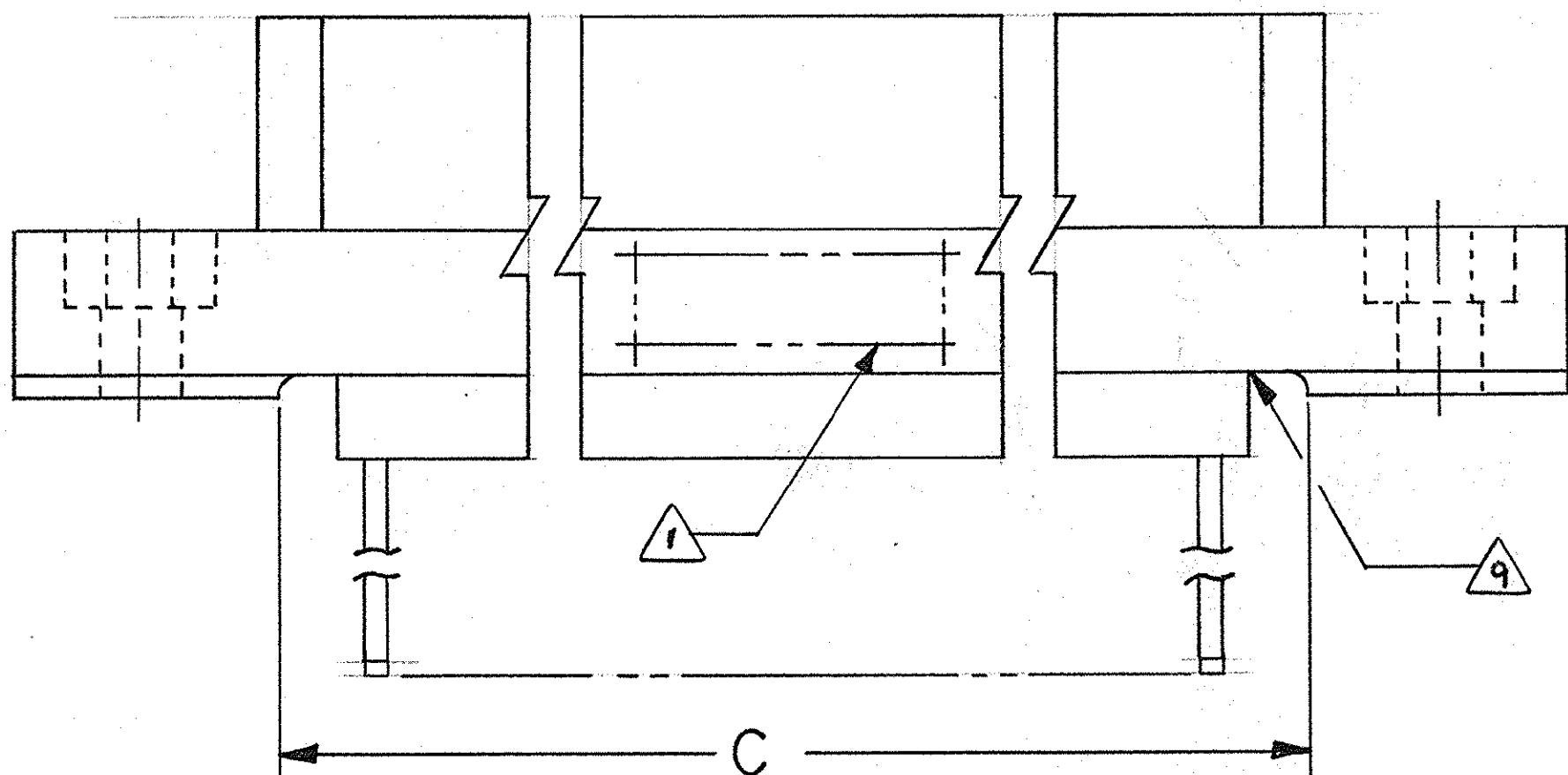
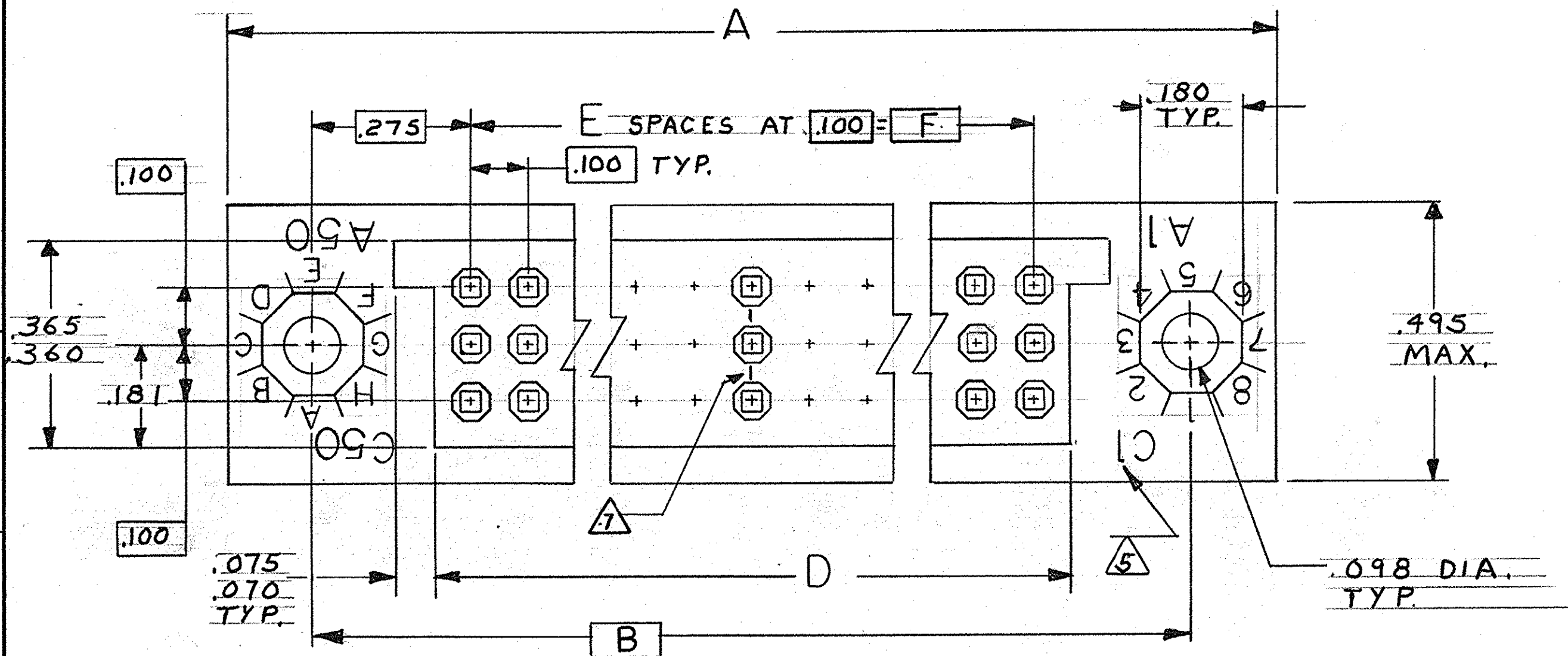


THIS DRAWING IS UNPUBLISHED. RELEASED FOR PUBLICATION, 19
© COPYRIGHT 19 BY AMP INCORPORATED, HARRISBURG, PA. ALL INTERNATIONAL RIGHTS RESERVED. AMP PRODUCTS MAY BE COVERED BY U.S. AND FOREIGN PATENTS AND/OR PATENTS PENDING.

REVISIONS						
P	F	ZONE	LTR	DESCRIPTION	DATE	APPROVED
✓	✓		O	RELEASED m.s.	2-86	
			A	REV PER ECO-05-013297	11-05	PY



UNLESS OTHERWISE SPECIFIED DIMENSIONS ARE IN INCHES. TOLERANCES ON: DECIMALS ±.010 ANGLES ±.010	CONTRACT NO	AMP AMP INCORPORATED Harrisburg, Pa. 17105	
	DR <i>M. Smith</i> 2-26-86	NAME	RECEPTACLE ASSEMBLY,
	CHK E. A. Mc Dougle 2-27-86		100 E, 3-ROW, W/MTG. EARS,
	APPD E. D. Mc Dougle 2-27-86		BOX CONT, WIRE WRAP POSTS
MATERIAL	DSGN APPD	SIZE	FSCM NO
FINISH	OTHER APPD	C	00779
		DRAWING NO	534173
		SCALE	5:1
		SHEET	1 OF 2

THIS DRAWING IS UNPUBLISHED. RELEASED FOR PUBLICATION, 19 .

© COPYRIGHT 19 BY AMP INCORPORATED, HARRISBURG, PA. ALL INTERNATIONAL RIGHTS RESERVED. AMP PRODUCTS MAY BE COVERED BY U.S. AND FOREIGN PATENTS AND/OR PATENTS PENDING.

REVISIONS					
P	F	ZONE	DESCRIPTION	DATE	APPROVED
✓	✓		A SEE SHT. 1		

- ① AMP PART NUMBER AND DATE CODE INK STAMPED WHITE THIS AREA
- ② HOUSING: VAPOR PHASEABLE THERMOPLASTIC COLOR: BROWN
- ③ CONTACT: BERYLLIUM COPPER OR COPPER-NICKEL-SILICONE
- ④ .000050 GOLD OVER .000030 NICKEL
- ⑤ LETTERS INDICATING OUTSIDE ROWS AND NUMBERS INDICATING END CAVITIES STAMPED WHITE THIS SURFACE.
- ⑥ MIL-C-55302 INSPECTION REQUIRED.
- ⑦ LINES INDICATING EVERY FIVE CAVITIES STAMPED ON MATING FACE.
- ⑧ MOLD BEING USED IS NOT PRODUCTION TOOLED.
- ⑨ STABILIZERS ARE EPOXIED TO HOUSING.

⑨	4.900	49	5.024	5.125	5.450	5.750	150	534173-1
REMARKS	F	E	D	C	B	A	NO. OF POS.	PART NO
UNLESS OTHERWISE SPECIFIED DIMENSIONS ARE IN INCHES. TOLERANCES ON: DECIMALS ± .010 ANGLES ±	CONTRACT NO		AMP AMP INCORPORATED Harrisburg, Pa. 17105					
	DR <i>M. Smith</i> 2-26-86	NAME RECEPTACLE ASSEMBLY,						
MATERIAL	CHK <i>F. A. McDougle</i> 2-27-86	100 ♀, 3-ROW, W/ MTG. EARS,						
FINISH	APPD <i>E. D. McDaniel Jr</i> 2-27-86	BOX CONT, WIRE WRAP POSTS.						
	APPD <i>B. J. Smith</i> 3/12/86	SIZE C	FSCM NO 00779	DRAWING NO 534173		SHEET 2 OF 2		
	DSGN APPD	SCALE						
	OTHER APPD							