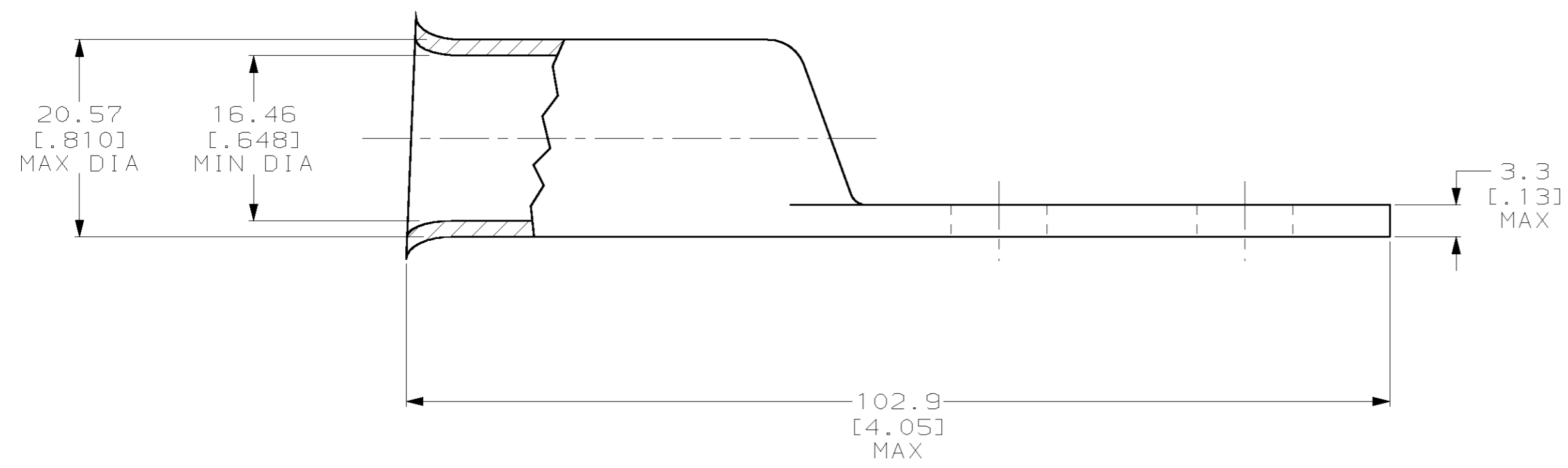
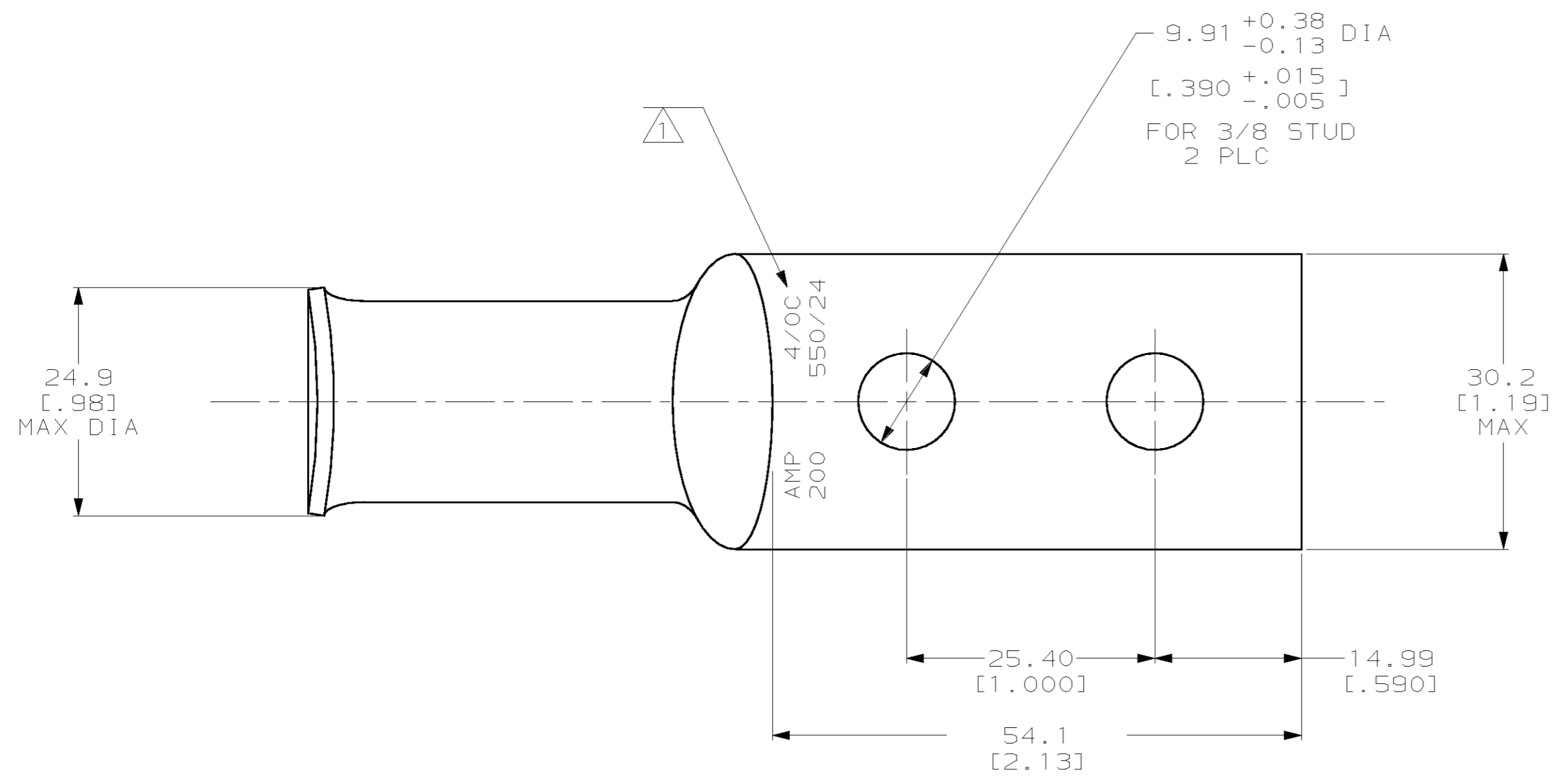


THIS DRAWING IS UNPUBLISHED. RELEASED FOR PUBLICATION
 (C) COPYRIGHT 19 BY AMP INCORPORATED. ALL RIGHTS RESERVED.

LOC	DIST	REVISIONS			
P	LTR	DESCRIPTION	DATE	DWN	APVD
G	86	H	REV PER 063A-0637-01	030CT02	JR MS



605685-1
PART NUMBER

<small>THIS DRAWING IS A CONTROLLED DOCUMENT FOR AMP INCORPORATED. IT IS SUBJECT TO CHANGE AND THE CONTROLLING ENGINEERING ORGANIZATION SHOULD BE CONTACTED FOR THE LATEST REVISION.</small>		DWN DK SCHRUM 05FEB96	AMP Incorporated Harrisburg, PA 17105-3608
DIMENSIONS: mm [INCHES]		CHK WJ VOCKROTH 08FEB96	
		APVD JL MECKLEY 08FEB96	
TOLERANCES UNLESS OTHERWISE SPECIFIED: 0 PLC ±- 1 PLC ±- 2 PLC ±0.5 [.023] 3 PLC ±0.13 [.005] 4 PLC ±- ANGLES ±-		PRODUCT SPEC - APPLICATION SPEC -	
MATERIAL COPPER PER ASTM B-75 ANNEALED		FINISH TIN PLATE 0.00381 [.000150] MIN THK PER MIL-T-10727	NAME TERMINAL, LONG BARREL, AMPOWER, WIRE SIZE: 4/0 AWG SIZE A2 CAGE CODE 00779 DRAWING NO C-605685 WEIGHT - SCALE 2:1 SHEET 1 OF 1 REV H
CUSTOMER DRAWING			

605685