

## ASEK-1332-T-KIT Quick Guide

The ASEK-1332-T-KIT as described below is for the purpose of evaluating the A1332 device.

### ASEK-1332-T-KIT Bill of Materials

- ASEK-20 Kit (Part # 85-0540-600)
  - ASEK-20 Chassis with main Motherboard inside (85-0540-004)
  - USB Communications Cable
  - DC Power Supply/Cable with AC Outlet Adapters
  - Proto Board ( Part # 85-0540-103) (Not required with A1332 communication)
  - Ribbon Cable (Part # 85-0540-300)
- ASEK-1332-SUBKIT-T:
  - A1332 Daughterboard (Part #: 85-0540-109 / Stenciled A1332)
  - A1332 Socketed single die grand-daughter board (Part #: 85-0676 / Stenciled A1332)



Figure 1. ASEK 20 Kit

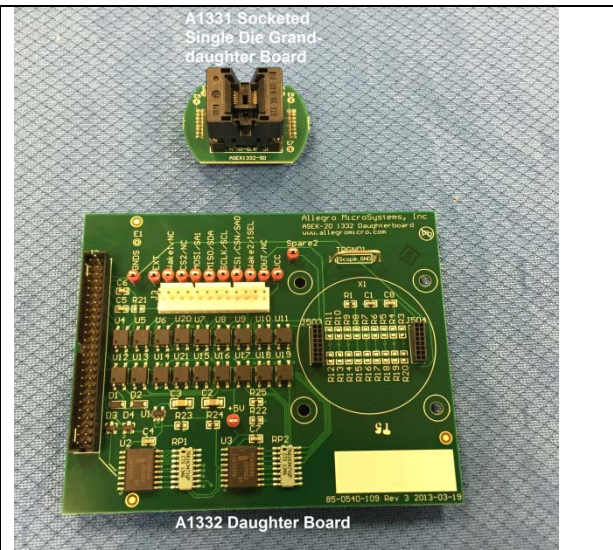


Figure 2. ASEK-1332-SUBKIT-T

## Instructions for Configuring ASEK-1332-T-KIT

1. Connect one end of the USB communications cable to a personal computer
2. Connect the other end of the USB communications cable to the “USB” port on the ASEK-20 chassis.
3. Connect the ribbon cable to the J2 connector on the daughterboard (85-0540-109)
4. Connect the other end of the ribbon cable to the “Device Connection” port on the ASEK-20 chassis
5. Mount the socketed grand-daughterboard (either 85-0676) onto the daughter board (85-0540-109)
6. Connect the DC Power Supply/Cable to the 5V port on the ASEK-20 chassis
7. Plug in the DC Power Supply to a 110V/220AC 60/50Hz outlet with the proper adapter
8. Place A1332 device in grand-daughter board (85-0676) socket.

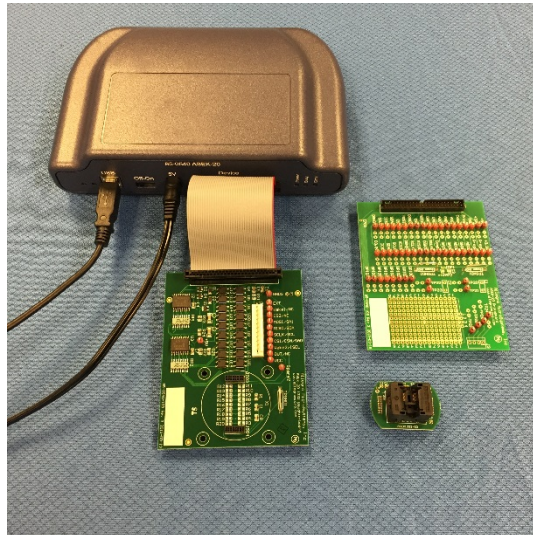


Figure 3. ASEK-1332-T-KIT

### Upload Software GUI for ASEK-1332-T-KIT

In order to upload the software, register at the software portal below:

<https://registration.allegromicro.com/login>

### A1332 Sample Devices

A1332 samples are not included with the ASEK-1332-T-KIT. Please contact your local FAE or factory for samples.

27 March 2015



---

### Revision History Table

Revision	Change Description	Res.	Page(s)	Date
-	Original release	MD	All	10/10/2013
	Added info about software and text edits	NK	All	3/27/2015