

EMG 22-RELS/K1-G 24

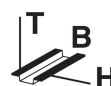
Order No.: 2950394

The illustration shows version EMG 22-RELS, with plug-in socket for cradle relay, size 1




<http://eshop.phoenixcontact.de/phoenix/treeViewClick.do?UID=2950394>

Relay module, with plug-in base for KAMMRELAIS® size 1, contact: B 104, 2 PDT, input voltage 24-48 V DC, with light indicator, damping and polarity protection diode



Commercial data

GTIN (EAN)	 4 017918 084035
sales group	G020
Pack	10 pcs.
Customs tariff	85364190
Catalog page information	Page 102 (IF-2002)

Product notes

WEEE/RoHS-compliant since:
01/02/2008



<http://www.download.phoenixcontact.com>
Please note that the data given here has been taken from the online catalog. For comprehensive information and data, please refer to the user documentation. The General Terms and Conditions of Use apply to Internet downloads.

Technical data

Connection data

Conductor cross section solid min.	0.2 mm ²
------------------------------------	---------------------

Conductor cross section solid max.	4 mm ²
Conductor cross section stranded min.	0.2 mm ²
Conductor cross section stranded max.	2.5 mm ²
Conductor cross section AWG/kcmil min.	24
Conductor cross section AWG/kcmil max	12
Type of connection	Screw connection
Stripping length	8 mm
Screw thread	M3

General data

Width	22.5 mm
Height	75 mm
Depth	82.5 mm
Color	green
Insulating material	PC-F
Ambient temperature (operation)	-20 °C ... 50 °C
Ambient temperature (storage/transport)	-20 °C ... 70 °C
Standards/regulations	DIN VDE 0110b, Gr. C for 250 V DC DIN VDE 0160 (in relevant parts)
Mounting position	Any
Assembly instructions	In rows with zero spacing

Certificates / Approvals



Certification GOST

Accessories

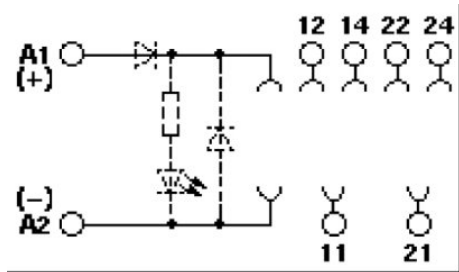
Item	Designation	Description
------	-------------	-------------

Marking

2947035	EMG-GKS 12	Equipment marker, width 12 mm
---------	------------	-------------------------------

Diagrams/Drawings

Circuit diagram



Address

PHOENIX CONTACT Deutschland GmbH
Flachmarktstr. 8
32825 Blomberg, Germany
Phone +49 5235 3 12000
Fax +49 5235 3 41200
<http://www.phoenixcontact.de>



© 2011 Phoenix Contact
Technical modifications reserved;