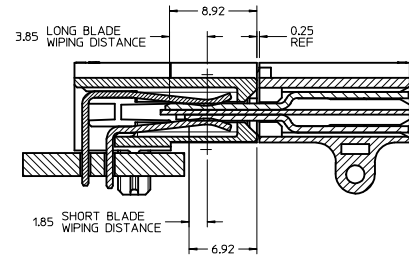
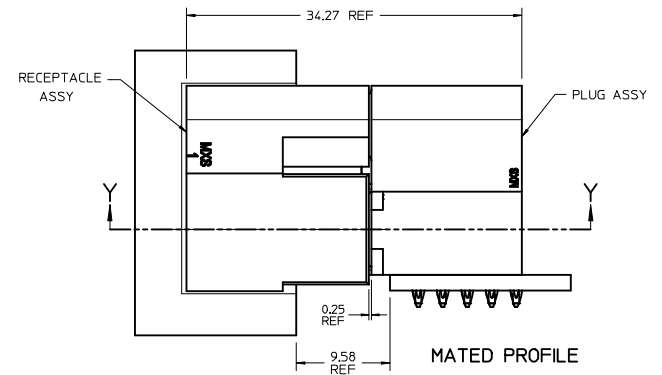
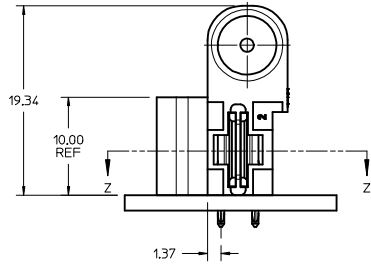


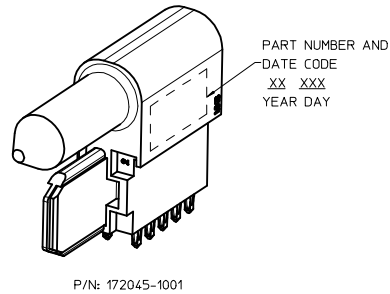
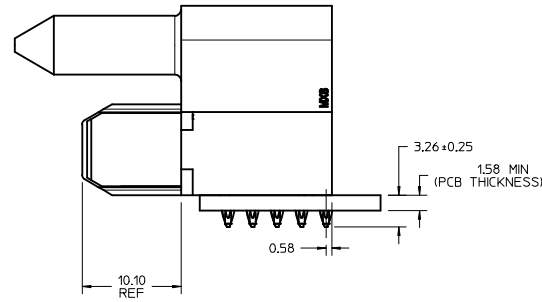
RECOMMENDED PCB LAYOUT AND KEEP OUT ZONE



SECTION Y-Y



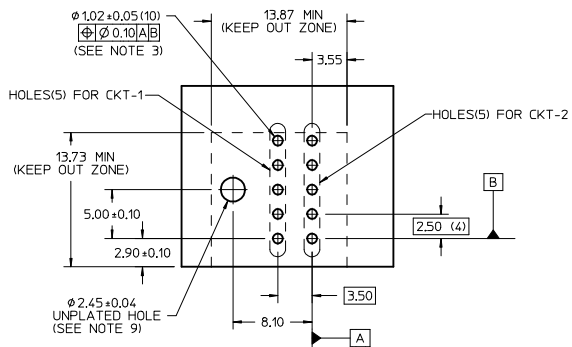
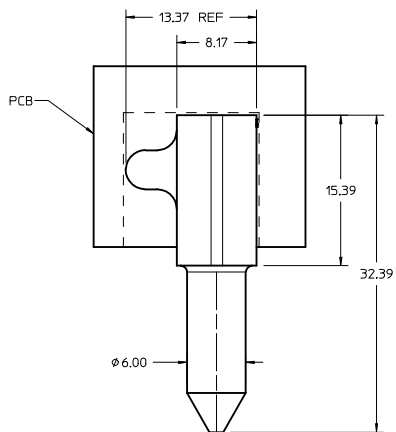
SECTION Z-Z



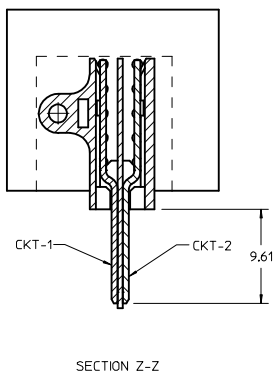
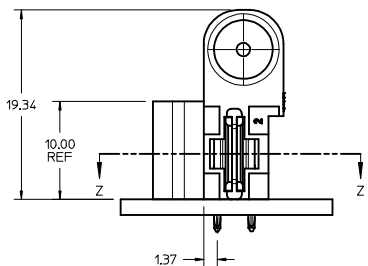
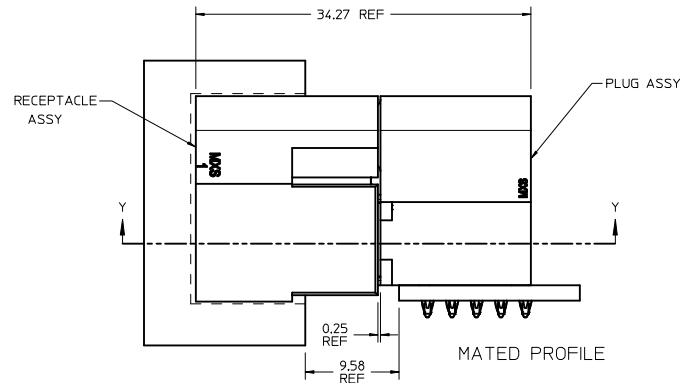
NOTES:

- MATERIAL:
 - HOUSINGS: LCP UL94, V-0, COLOR : BLACK
 - TERMINALS: HIGH CONDUCTIVITY COPPER ALLOY
 - PLATING: 1.27 MICROMETER MIN. (50 MICROINCH) NICKEL OVERALL WITH 2.54 MICROMETER MIN. (100 MICROINCH) SELECTIVE TIN ON TAILS AND 0.762 MICROMETER MIN. (30 MICROINCH) SELECTIVE GOLD ON CONTACT AREA
- PACKAGING: ASSEMBLIES TO BE TRAY PACKED PER PACKAGING SPEC: PK-172045-1001
- PLATED THRU HOLE SIZE, REFER TO PS-46436-100 FOR DETAILS
- PRODUCT SPEC: PS-172047-1001
- APPLICATION SPEC: AS-46436-100
- PRODUCT TO MEET RoHS REQUIREMENTS
- ASSEMBLY MATES TO MOLEX RECEPTACLE ASSEMBLY P/N 172047-1001.
- TAIL DESIGN: COMPLIANT PIN.
- SCREW NOT SUPPLIED BY MOLEX. USE #2-32 X .375 TYPE AB SELF TAPPING SCREW. RECOMMENDED SCREW LENGTH CAN BE USED WITH UP TO A 4.4mm MAX BOARD THICKNESS.
- POWER CIRCUITS ARE LUBRICATED

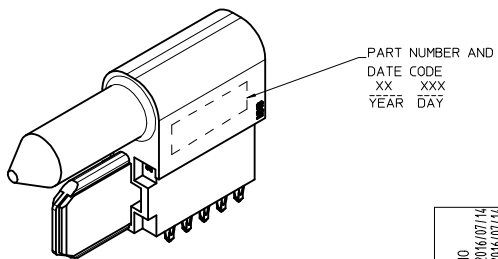
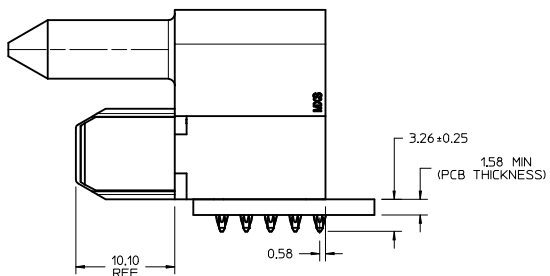
REVISED NOTE IEC NO. UCF2017-0110 DRAWN: JUILLES 2016/07/14 CHKD: BPI/SZCZOR 2016/07/14 APPR: BPI/SZCZOR 2016/07/26	QUALITY SYMBOLS	GENERAL TOLERANCES (UNLESS SPECIFIED)	DIMENSION STYLE	SCALE	DESIGN UNITS	THIRD ANGLE PROJECTION																		
	$\nabla=0$ $\nabla=0$ $\nabla=0$	<table border="1"> <thead> <tr> <th></th> <th>mm</th> <th>INCH</th> </tr> </thead> <tbody> <tr> <td>4 PLACES</td> <td>±---</td> <td>±---</td> </tr> <tr> <td>3 PLACES</td> <td>±---</td> <td>±---</td> </tr> <tr> <td>2 PLACES</td> <td>±0.25</td> <td>±---</td> </tr> <tr> <td>1 PLACE</td> <td>±0.25</td> <td>±---</td> </tr> <tr> <td>0 PLACE</td> <td>±---</td> <td>±---</td> </tr> </tbody> </table>		mm	INCH	4 PLACES	±---	±---	3 PLACES	±---	±---	2 PLACES	±0.25	±---	1 PLACE	±0.25	±---	0 PLACE	±---	±---	MM ONLY	4:1	METRIC	
		mm	INCH																					
	4 PLACES	±---	±---																					
3 PLACES	±---	±---																						
2 PLACES	±0.25	±---																						
1 PLACE	±0.25	±---																						
0 PLACE	±---	±---																						
DRAFT WHERE APPLICABLE MUST REMAIN WITHIN DIMENSIONS	DRAWN BY: EANG CHECKED BY: DATE APPROVED BY: KHL/IM DATE: 2013/09/13 DATE: 2013/10/22	TITLE: ORTHO POWER PLUG ASSY molex	MATERIAL NO.: 172045-1001 DOCUMENT NO.: SD-172045-1001	SHEET NO.: 1 OF 1																				
THIS DRAWING CONTAINS INFORMATION THAT IS PROPRIETARY TO MOLEX INCORPORATED AND SHOULD NOT BE USED WITHOUT WRITTEN PERMISSION																								



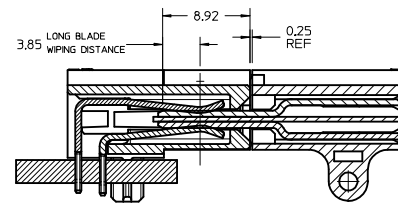
RECOMMENDED PCB LAYOUT AND KEEP OUT ZONE



SECTION Z-Z



P/N: 172045-1001



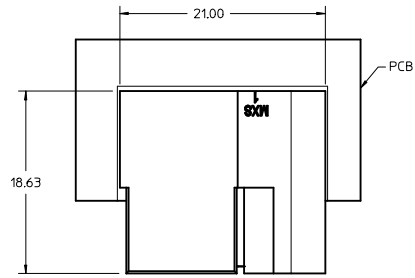
SECTION Y-Y

NOTES:

- MATERIAL:
 - HOUSINGS: LCP UL94, V-0. COLOR : BLACK
 - TERMINALS: HIGH CONDUCTIVITY COPPER ALLOY
 - PLATING: 1.27 MICROMETER MIN. (50 MICROINCH) NICKEL OVERALL WITH 2.54 MICROMETER MIN. (100 MICROINCH) SELECTIVE TIN ON TAILS AND 0.762 MICROMETER MIN. (30 MICROINCH) SELECTIVE GOLD ON CONTACT AREA
- PACKAGING: ASSEMBLIES TO BE TRAY PACKED PER PACKAGING SPEC: PK-172045-1002
- PLATED THRU HOLE SIZE. REFER TO PS-46436-100 FOR DETAILS
- PRODUCT SPEC: PS-172047-1002
- APPLICATION SPEC: AS-46436-100
- PRODUCT TO MEET RoHS REQUIREMENTS
- ASSEMBLY MATES TO MOLEX RECEPTACLE ASSEMBLY P/N 172047-1001.
- TAIL DESIGN: COMPLIANT PIN.
- SCREW NOT SUPPLIED BY MOLEX. USE #2-32 X .375 TYPE AB SELF TAPPING SCREW. RECOMMENDED SCREW LENGTH CAN BE USED WITH UP TO A 4.4mm MAX BOARD THICKNESS.
- POWER CIRCUITS ARE LUBRICATED

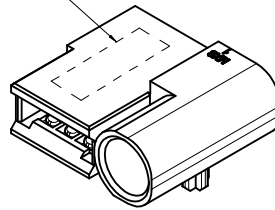
REVISED NOTE IEC NO. UCF2017-0110 DRAWN: JUILLES 2016/07/14 CHKD: BPI/SZCZOR 2016/07/14 APPR: BPI/SZCZOR 2016/07/26	QUALITY SYMBOLS	GENERAL TOLERANCES (UNLESS SPECIFIED)	DIMENSION STYLE	SCALE	DESIGN UNITS	THIRD ANGLE PROJECTION
	▽=0	mm INCH	MM ONLY	4:1	METRIC	ORTHOGONAL
	▽=0	4 PLACES ± --- ± ---	DRAWN BY DATE			ORTHOGONAL POWER PLUG ASSY molex
	▽=0	3 PLACES ± --- ± ---	CHECKED BY DATE			
	ANGULAR ±1/2°	DRAFT WHERE APPLICABLE MUST REMAIN WITHIN DIMENSIONS	MATERIAL NO.	DOCUMENT NO.	SHEET NO.	
			172045-1002	SD-172045-1002	1 OF 1	

THIS DRAWING CONTAINS INFORMATION THAT IS PROPRIETARY TO MOLEX INCORPORATED AND SHOULD NOT BE USED WITHOUT WRITTEN PERMISSION

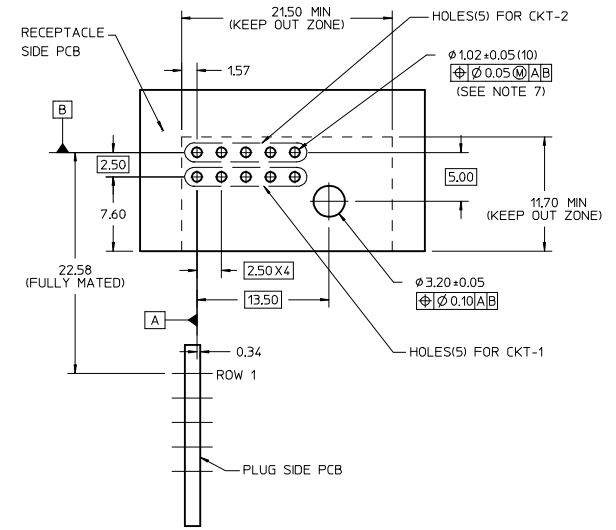
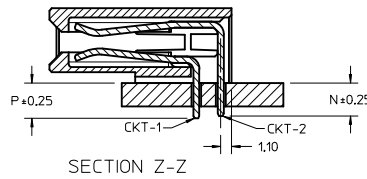
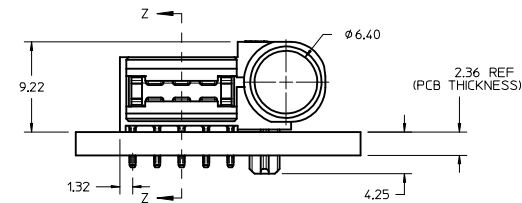


PART NUMBER AND DATE CODE

XX XXX
YEAR DAY



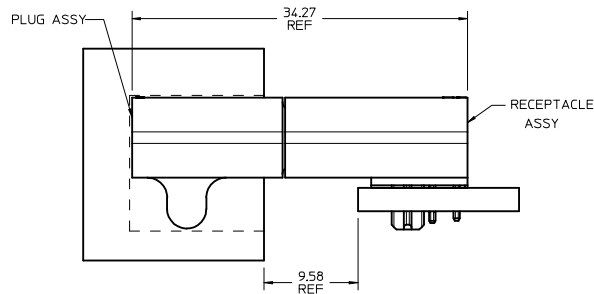
P/N: 172047-1001



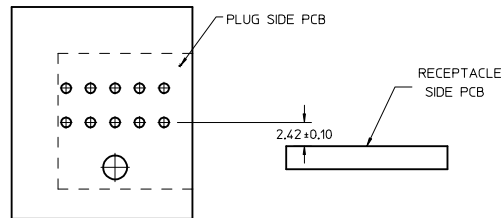
RECOMMENDED PCB LAYOUT AND KEEP OUT ZONE

NOTES:

1. MATERIAL HOUSING: GLASS FILLED LCP (LIQUID CRYSTAL POLYMER), 94V-0, COLOR-BLACK CONTACT: COPPER ALLOY
2. FINISH: SELECT GOLD - 0.76 MICROMETERS/30 MICROINCHES MINIMUM CONTACT SELECT TIN - 3.81 MICROMETERS/150 MICROINCHES MINIMUM TAIL BOTH OVER NICKEL - 1.27 MICROMETERS/50 MICROINCHES MINIMUM.
3. POWER TERMINALS LUBRICATED IN CONTACT AREA
4. PRODUCT SPECIFICATION: PS-172047-1001
5. PACKAGING: TRAY PACKED PER PACKAGING SPEC: PK-172047-1001
6. PRODUCT TO MEET RoHS COMPLIANT
7. PLATED THRU HOLE SIZE, REFER TO PS-46114-001 FOR DETAILS
8. ASSEMBLY MATES TO MOLEX PART P/N: 172045-1001
9. TAIL DESIGN: SOLDER TAIL



MATED PROFILE



MATERIAL P/N	DIM P	DIM N
1720471001	3.60	3.35
1720471002	4.50	4.25
1720471003	2.90	2.65

REV DIM TO REF IEC NO: UCP2016-2684 DRAWN: OULLES 2016/01/05 CHKDRP: SZCZOR 2016/01/06 APPROB: PLSZCZOR	QUALITY SYMBOLS	GENERAL TOLERANCES (UNLESS SPECIFIED)	DIMENSION STYLE	SCALE	DESIGN UNITS	THIRD ANGLE PROJECTION
	▽=0	mm INCH	MM ONLY	4:1	METRIC	☉
	▽=0	4 PLACES ±--- ±--- 3 PLACES ±--- ±--- 2 PLACES ±0.25 ±--- 1 PLACE ±0.25 ±---	DRAWN BY DATE EANG 2013/09/23	DATE	TITLE ORTHO POWER RECEPTACLE ASSY	
	▽=0	ANGULAR ±1/2°	CHECKED BY DATE	DATE	APPROVED BY DATE KHLIM 2013/10/22	
DRAFT WHERE APPLICABLE MUST REMAIN WITHIN DIMENSIONS		SEE TABLE	MATERIAL NO.	DOCUMENT NO.	MOLEX INCORPORATED SD-172047-1001	
SIZE D		THIS DRAWING CONTAINS INFORMATION THAT IS PROPRIETARY TO MOLEX INCORPORATED AND SHOULD NOT BE USED WITHOUT WRITTEN PERMISSION				