

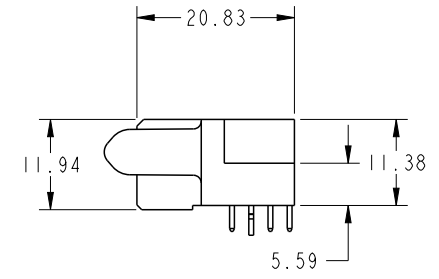
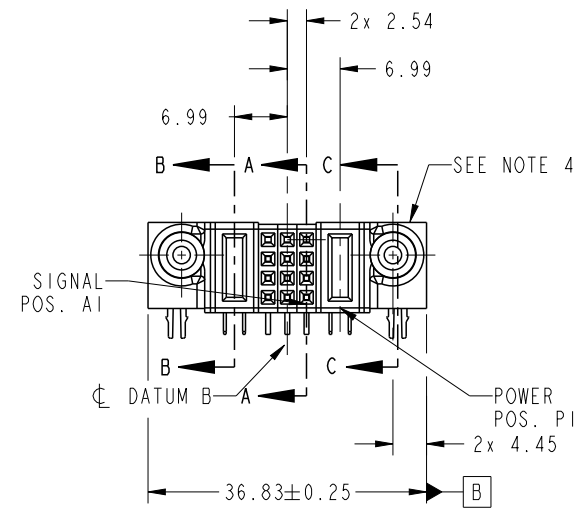
1

2

3

4

PRODUCT NO.	ROWS	POW	SIG	POW
51770-052-- NOTE 3	D C B A	E2	P2 3 2 1	P1 E1
		PC	H G F E	PA



CODE	DIM "M" MATING LENGTH	CONTACT TYPE
PC	[2.34]	POWER
PA	[1.07]	POWER
H	[N/A]	SIGNAL
G	[N/A]	SIGNAL
F	[N/A]	SIGNAL
E	[N/A]	SIGNAL
HA	[N/A]	HOLD-DOWN



Copyright FCI.

spec ref	SEE NOTES	dr	Luo Weller	2013/05/14	projection	MM	size	A4	scale	1:1
tolerance std	TOLERANCES UNLESS OTHERWISE SPECIFIED	eng	Luo Weller	2013/05/23			ecn no	-	rel level	Released
SEE NOTES		chr	-	-						
surface	linear	appr	Pei-Ming Zheng	2013/05/23	product family	PwrBlade	rev	A		
	angular									
	0.X									
	0.XX									
	0.XXX									
	±0.50									
	±0.25									
	±0.10									
	0°									
	±2°									
		www.fci.com	cat. no.		Product - Customer Drw			sheet 1 of 4		
			title		IP+12S+IP		dwg no		51770-052	
					R/A SOLDER RECEPTACLE					

PrdE File - REV C - 2009-06-09

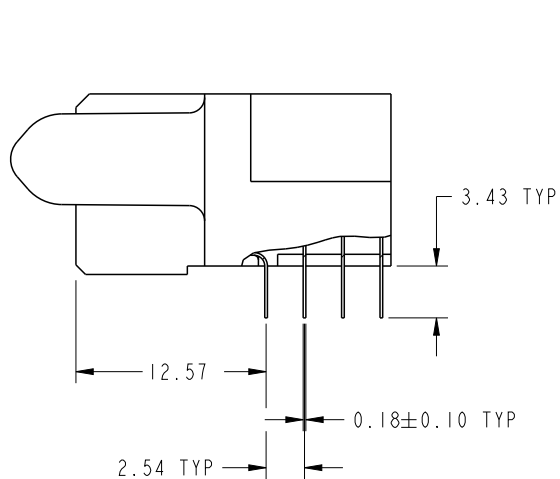
2

3

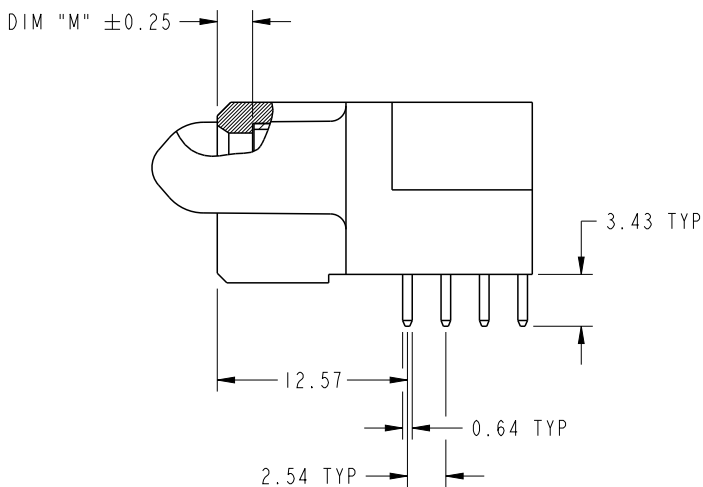
4

PRODUCT NUMBER

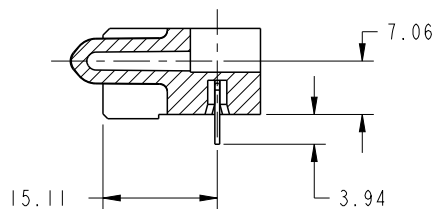
51770-052\_\_  
NOTE 3



BROKEN-OUT SECTION A-A  
SCALE 2:1



BROKEN-OUT SECTION B-B  
SCALE 2:1

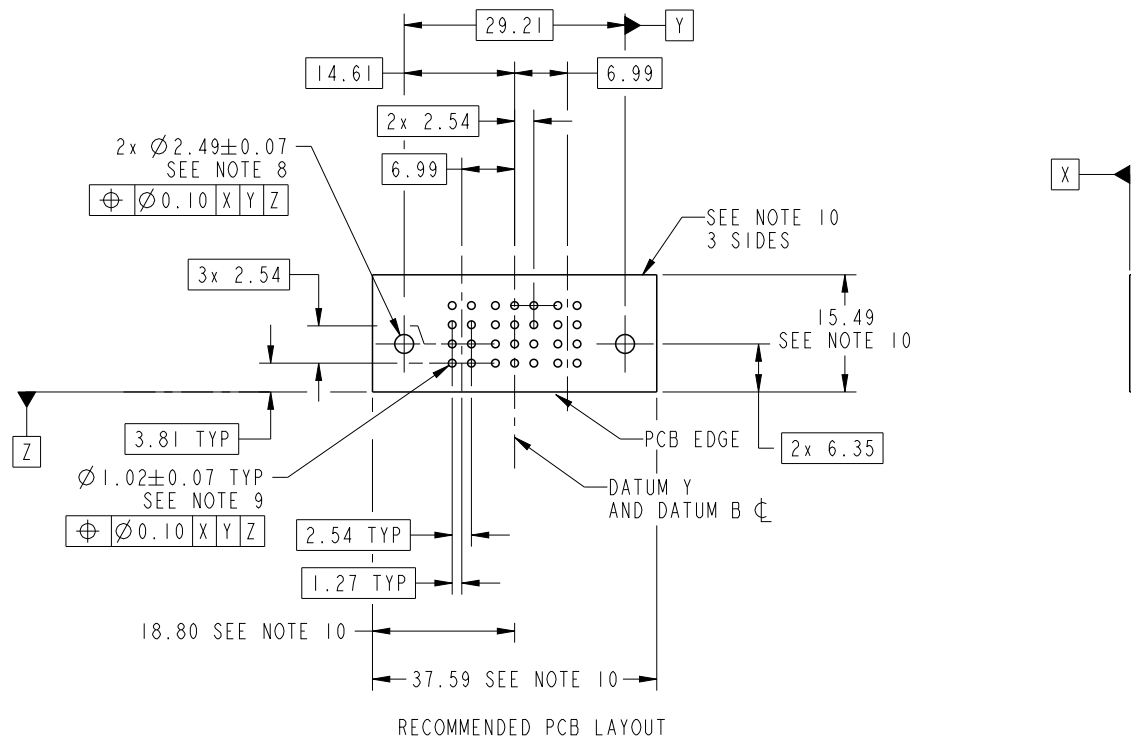


SECTION C-C

dr	Luo Weller	2013/05/14	projection 	MM 	size	A4	scale	1:1
eng	Luo Weller	2013/05/23			ecn no	-		
chr	-	-			rel level	Released		
appr	Pei-Ming Zheng	2013/05/23	product family	PwrBlade	rev	51770-052	A	
		title IP+12S+IP R/A SOLDER RECEPTACLE	dwg no	Product - Customer Drw	sheet 2 of 4			
www.fci.com		cat. no.	Product - Customer Drw			sheet 2 of 4		

PRODUCT NUMBER

51770-052\_\_  
NOTE 3



RECOMMENDED PCB LAYOUT

dr	Luo Weller	2013/05/14	projection 	MM 	size	A4	scale	1:1		
eng	Luo Weller	2013/05/23			ecn no	-				
chr	-	-			product family	PwrBlade	rel level	Released		
appr	Pei-Ming Zheng	2013/05/23	www.fci.com		title	IP+12S+IP R/A SOLDER RECEPTACLE	dwg no	51770-052	rev	A
cat. no.		Product - Customer Drw			sheet 3 of 4					

PRODUCT NUMBER

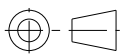
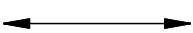

51770-052--  
NOTE 3

NOTES:

1. DIMENSIONS AND TOLERANCES ARE IN ACCORDANCE WITH ASME Y14.5M, 1994 UNLESS OTHERWISE SPECIFIED.

CONNECTOR NOTES:

- 2. HOUSING MATERIAL: UL 94 V-0 GLASS FILLED HIGH-TEMP THERMOPLASTIC  
POWER CONTACT MATERIAL: COPPER ALLOY  
SIGNAL PIN MATERIAL: COPPER ALLOY
  - 3. SEE ITEM 5 & 6 IN PRINT 10064183 FOR PLATING SPEC OF 51770-052 AND 51770-052LF RESPECTIVELY.
  - 4. MANUFACTURER'S NAME, DATE CODE AND OPTIONAL P/N TO APPEAR ON THIS SURFACE. THE MARK CAN BE OMITTED IF THERE IS NOT ENOUGH SPACE ON THIS SURFACE.
  - 5. PRODUCT SPECIFICATION GS-12-149.  
APPLICATION SPECIFICATION BUS-20-067.
  - 6. PACKAGED IN TRAYS.
- PCB NOTES:
- 7. ALL HOLE DIAMETERS ARE FINISHED HOLE SIZE.
  - 8. MOUNTING HOLES, WHERE APPLICABLE, ARE UNPLATED.
  - 9.  $\varnothing 1.151 \pm 0.025$  DRILLED HOLES PLATED WITH  
0.008 MIN SnPb OR Sn OVER 0.03  
TO 0.08 Cu PLATING TO ACHIEVE  
 $\varnothing 1.02 \pm .07$  HOLE.
  - 10. CONNECTOR KEEP-OUT ZONE.

dr	Luo Weller	2013/05/14	projection 	MM 	size	A4	scale	1:1
eng	Luo Weller	2013/05/23			ecn no	-		
chr	-	-			product family	PwrBlade	rel level	Released
appr	Pei-Ming Zheng	2013/05/23			title IP+12S+IP R/A SOLDER RECEPTACLE	dwg no 51770-052	rev A	
www.fci.com		cat. no.	Product - Customer Drw			sheet 4 of 4		



Copyright FCI.