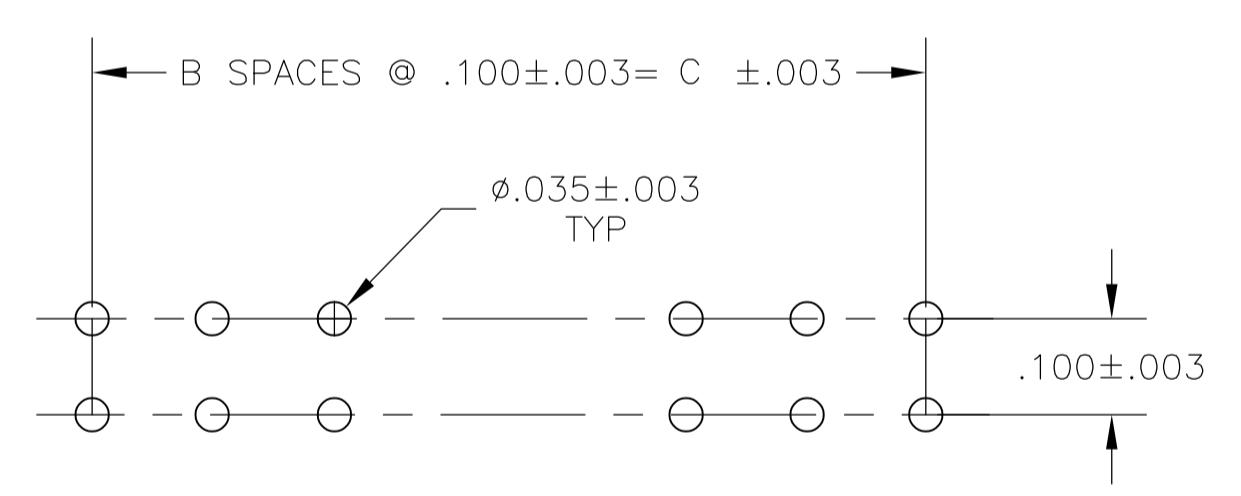
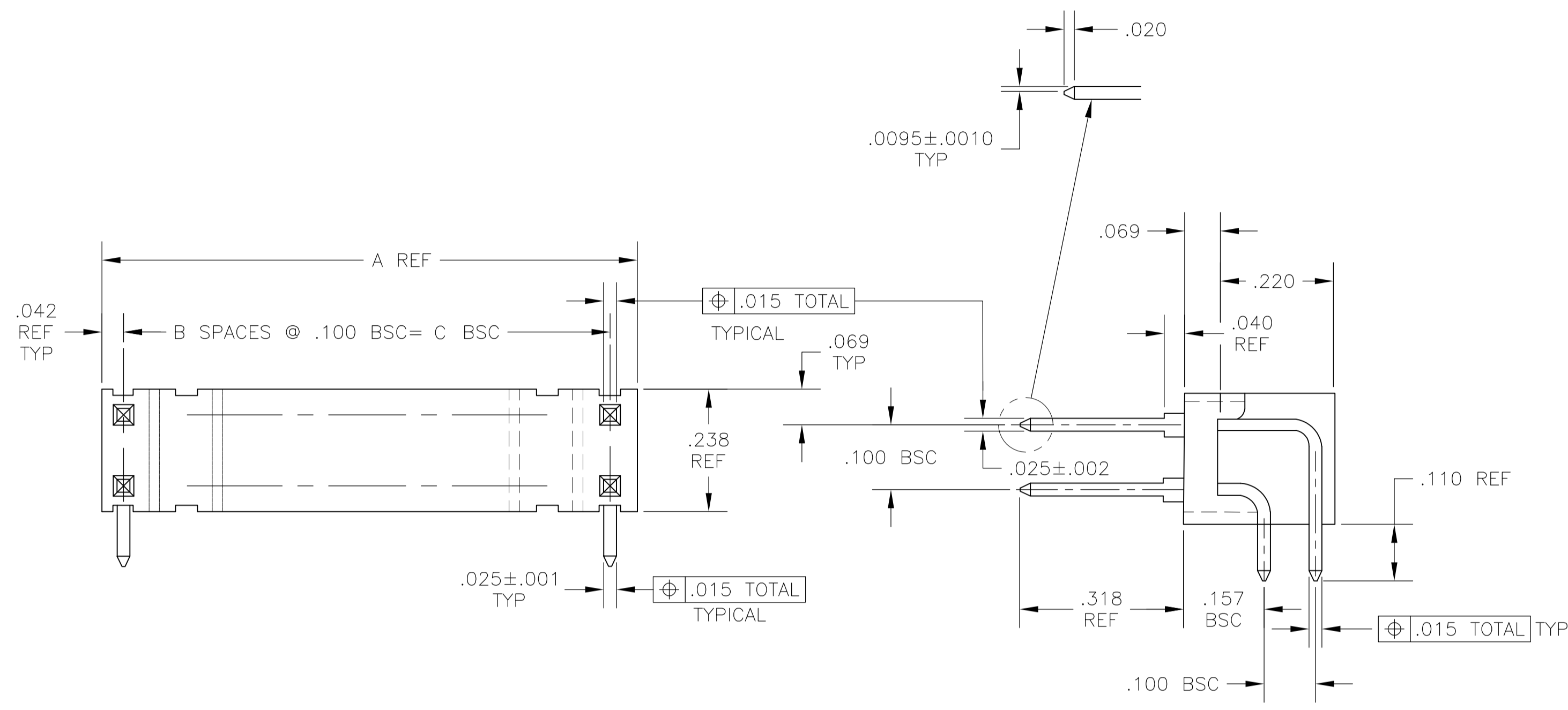


- 1 PRELIMINARY PART--NOT RELEASED FOR PRODUCTION.
- 2 .000100-.000200 BRIGHT TIN-LEAD OVER .000050 NICKEL.
- 3 .000100-.000200 MATTE TIN OVER .000050 NICKEL.
- 4 OBSOLETE PARTS: OBSOLETE CIS STREAMLINING PER D.RENAUD/D.SINISI



RECOMMENDED HOLE LAYOUT

REV	DATE	DESCRIPTION	BY	CHK	APVD
1					
2					
3					
4					
5					
6					
7					
8					
9					
10					
11					
12					
13					
14					
15					
16					
17					
18					
19					
20					
21					
22					
23					
24					
25					
26					
27					
28					
29					
30					
31					
32					
33					
34					
35					
36					
37					
38					
39					
40					
41					
42					
43					
44					
45					
46					
47					
48					
49					
50					
51					
52					
53					
54					
55					
56					
57					
58					
59					
60					
61					
62					
63					
64					
65					
66					
67					
68					
69					
70					
71					
72					
73					
74					
75					
76					
77					
78					
79					
80					
81					
82					
83					
84					
85					
86					
87					
88					
89					
90					
91					
92					
93					
94					
95					
96					
97					
98					
99					
100					

PLATING	C	B	A	NO OF POSN	PART NO
---------	---	---	---	------------	---------

THIS DRAWING IS A CONTROLLED DOCUMENT.

TE Connectivity

HEADER ASSY MOD II RIGHT  
ANGLE .025 SQ POSTS DOUBLE  
ROW .100 X .100 CENTERS

00779-87563

SCALE 5:1 SHEET 1 OF 1 REV J2