

PERFORMANCE SUMMARY (T_A = 25°C)

PARAMETER	CONDITION	VALUE
Input Voltage Range		5.5V ~ 16V
Output Voltage V _{OUT1}	V _{IN} = 5.5V ~ 16V, I _{OUT1} = 0A ~ 13A, JP1: CCM	3.3V ±1.5%
Output Voltage V _{OUT2}	V _{IN} = 5.5V ~ 16V, I _{OUT2} = 0A ~ 13A, JP1: CCM	5V ±1.5%
Per-Channel Maximum Continuous Output Current	Derating is Necessary for Certain V _{IN} , V _{OUT} and Thermal Conditions, See Data Sheet for Detail.	13A (per-Channel)
Default Operating Frequency		750kHz
Resistor Programmable Frequency Range		250kHz to 780kHz
External Clock Sync. Frequency Range		400kHz to 780kHz
Efficiency of Channel 1	V _{IN} = 12V, V _{OUT1} = 3.3V, I _{OUT1} = 13A, f _{SW} = 750kHz	91.7% See Figure 3
Efficiency of Channel 2	V _{IN} = 12V, V _{OUT2} = 5V, I _{OUT2} = 13A, f _{SW} = 750kHz	93.8% See Figure 4
Load Transient of Channel 1	V _{IN} = 12V, V _{OUT1} = 3.3V, I _{SETP} = 6.5A ~ 13A	See Figure 5
Load Transient of Channel 2	V _{IN} = 12V, V _{OUT2} = 5V, I _{SETP} = 6.5A ~ 13A	See Figure 6

QUICK START PROCEDURE

Demonstration circuit 1759A is easy to set up to evaluate the performance of the LTM4620AEV. Please refer to Figure 2 for proper measurement setup and follow the procedure below:

- Place jumpers in the following positions for a typical application:

JP1	JP2	JP3	JP4	JP5	JP6
MODE	RUN1	RUN2	TRACK1 SEL.	TRACK2 SEL.	CLKOUT PHASE
CCM	ON	ON	SOFT-START	SOFT-START	90°

- With power off, connect the input power supply, load and meters as shown in Figure 2. Preset the load to 0A and V_{IN} supply to 12V.
- Turn on the power supply at the input. The output voltage in channel 1 should be 3.3V ±1.5% (3.2505V ~ 3.3495V) and the output voltage in channel 2 should be 5V ±1.5% (4.925V ~ 5.075V).
- Once the proper output voltage is established, adjust the load within the operating range and observe the output voltage regulation, output voltage ripple, efficiency and other parameters. Output ripple should be measured at J1 and J2 with BNC cables. 50Ω termination should be set on the oscilloscope or BNC cables.
- (Optional) For optional load transient test, apply an adjustable pulse signal between IOSTEP CLK and GND test point. Pulse amplitude (3V ~ 3.5V) sets the load step current amplitude. The output transient current can be monitored at the BNC connector J3 (15mV/A). The pulse signal should have very small duty cycle (<1%) to limit the thermal stress on the transient load circuit. Switch the jumper resistors R34 or R35 (on the backside of boards) to apply load transient on channel 1 or channel 2 correspondingly.
- (Optional) LTM4620A can be synchronized to an external clock signal. Place the JP1 jumper on EXT_CLK and apply a clock signal (0V ~ 5V, square wave) on the CLKIN test point.
- (Optional) The outputs of LTM4620A can track another supply. The jumpers JP4 and JP5 allow choosing soft-start or output tracking. If tracking external voltage is selected, the corresponding test points, TRACK1 and TRACK2, need to be connected to a valid voltage signal.
- (Optional) LTM4620A can be configured for a 2-phase single output at up to 26A on DC1759A. Install 0Ω resistors on R14, R17, R28, R39 and remove R7, R19. Output voltage is set by R25 based on equation V_{OUT} = 0.6V(1 + 60.4k/R25).

QUICK START PROCEDURE

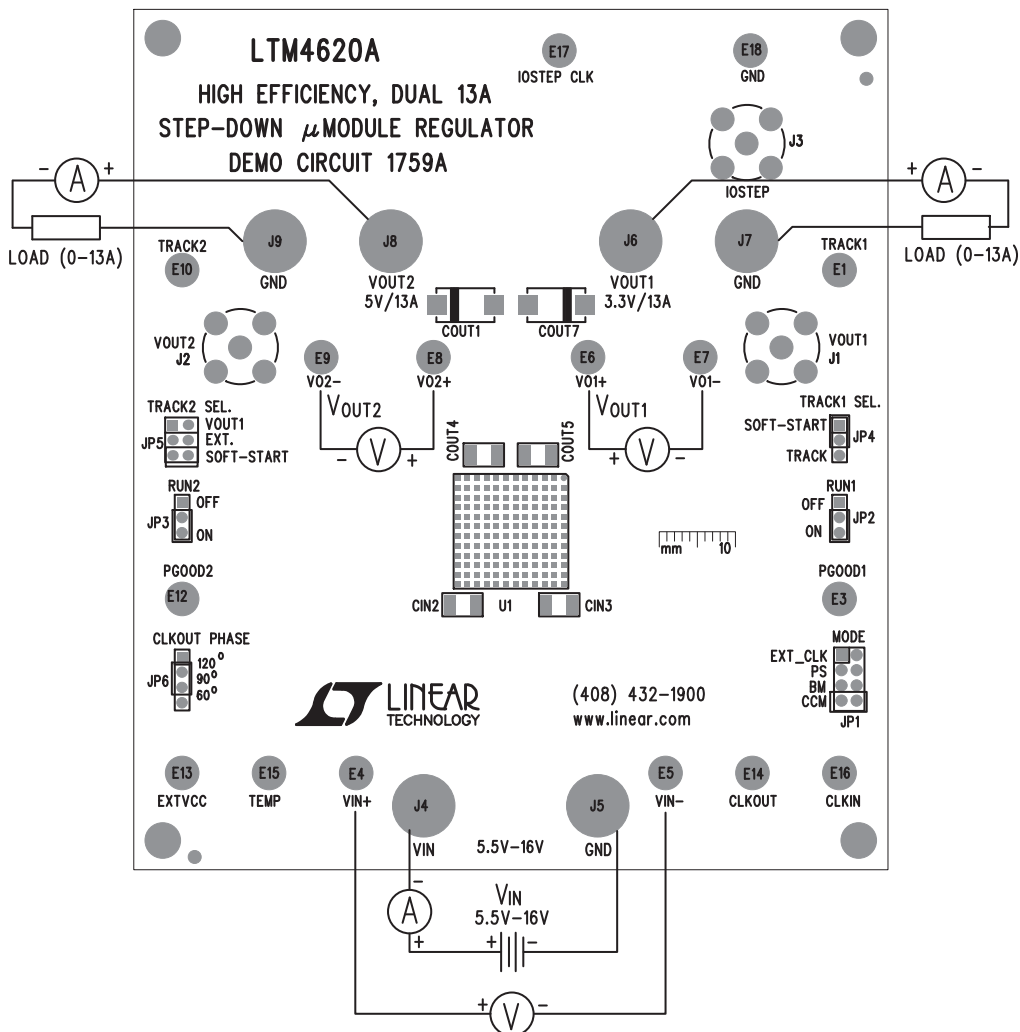


Figure 2. Test Setup of DC1759A

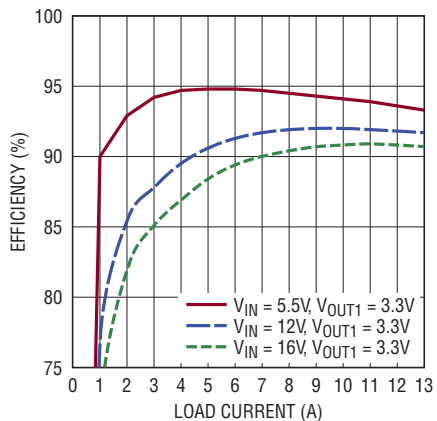


Figure 3. Measured Efficiency on Channel 1
($V_{OUT1} = 3.3V$, $f_{sw} = 750kHz$, Channel 2 Disabled)

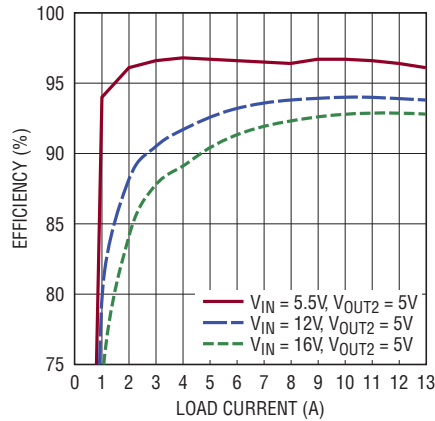


Figure 4. Measured Efficiency on Channel 2
($V_{OUT2} = 5V$, $f_{sw} = 750kHz$, Channel 1 Disabled)

QUICK START PROCEDURE

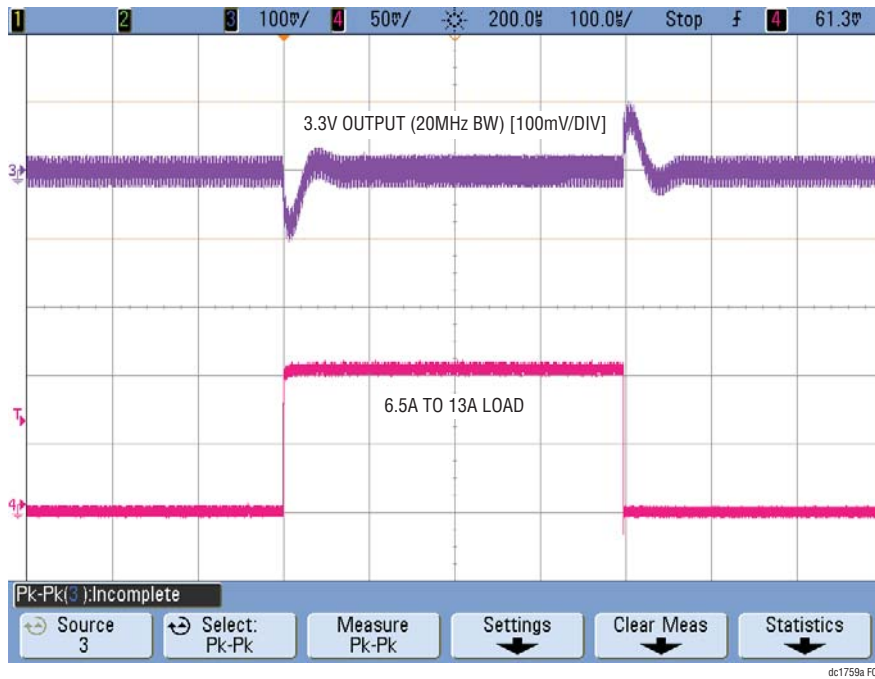


Figure 5. Measured Channel 1 6.5A to 13A Load Transient ($V_{IN} = 12V$, $V_{OUT1} = 3.3V$)

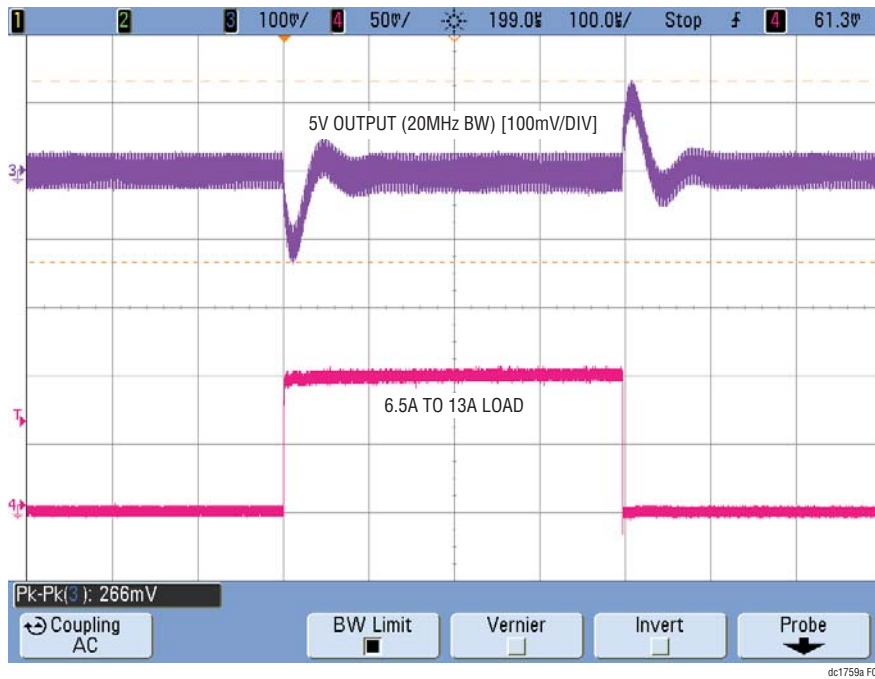


Figure 6. Measured Channel 2 6.5A to 13A Load Transient ($V_{IN} = 12V$, $V_{OUT2} = 5V$)

QUICK START PROCEDURE

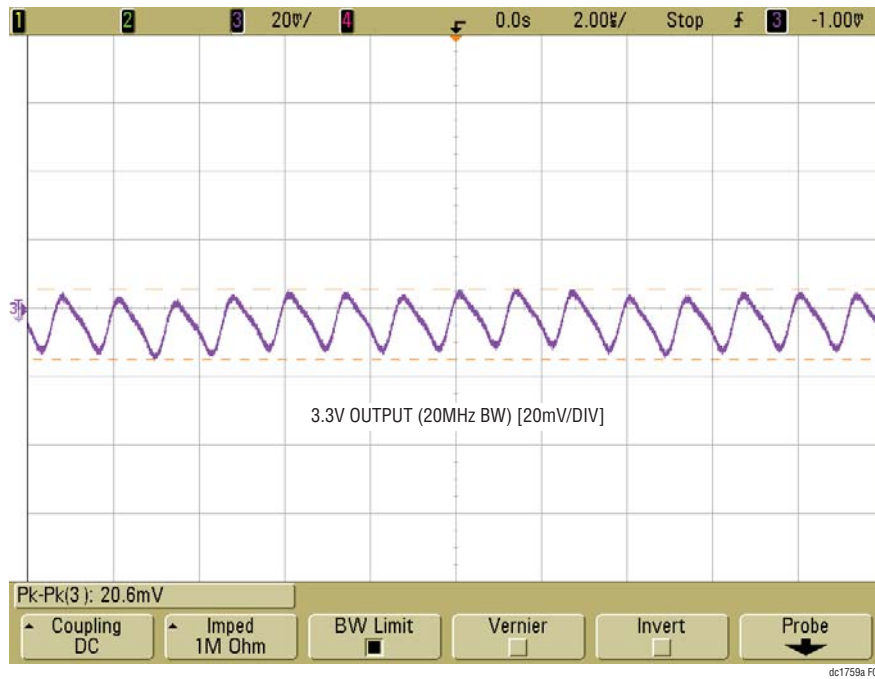


Figure 7. Measured Output Voltage Ripple at 12V Input, 3.3V/13A Output with Standard Demo Circuit Default Setup

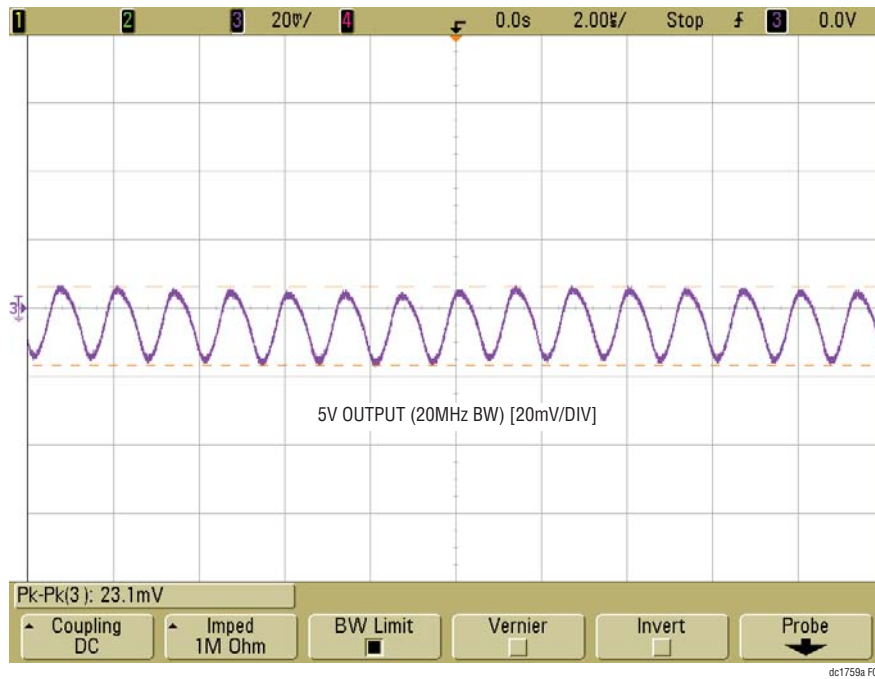


Figure 8. Measured Output Voltage Ripple at 12V Input, 5V/13A Output with Standard Demo Circuit Default Setup

QUICK START PROCEDURE

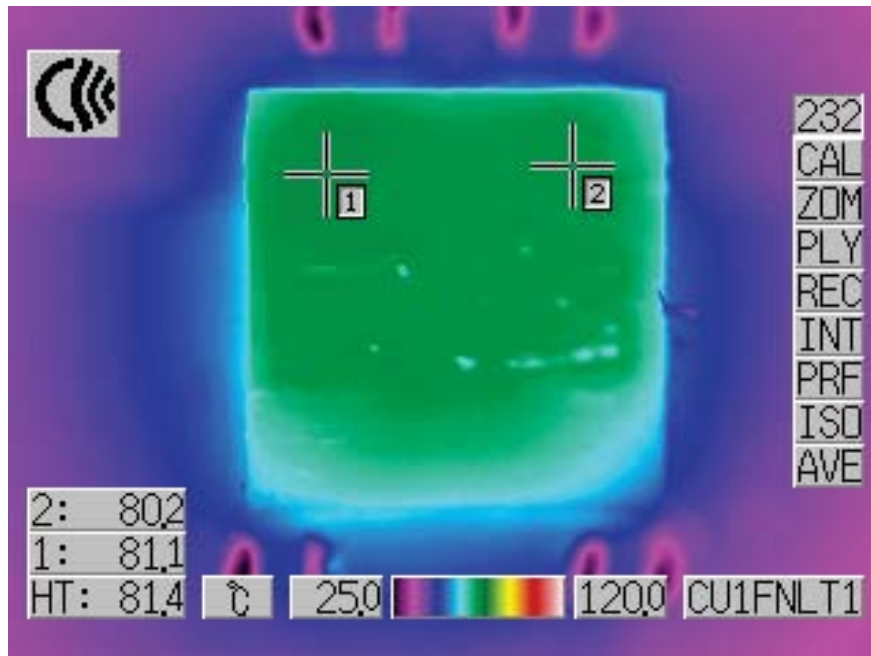


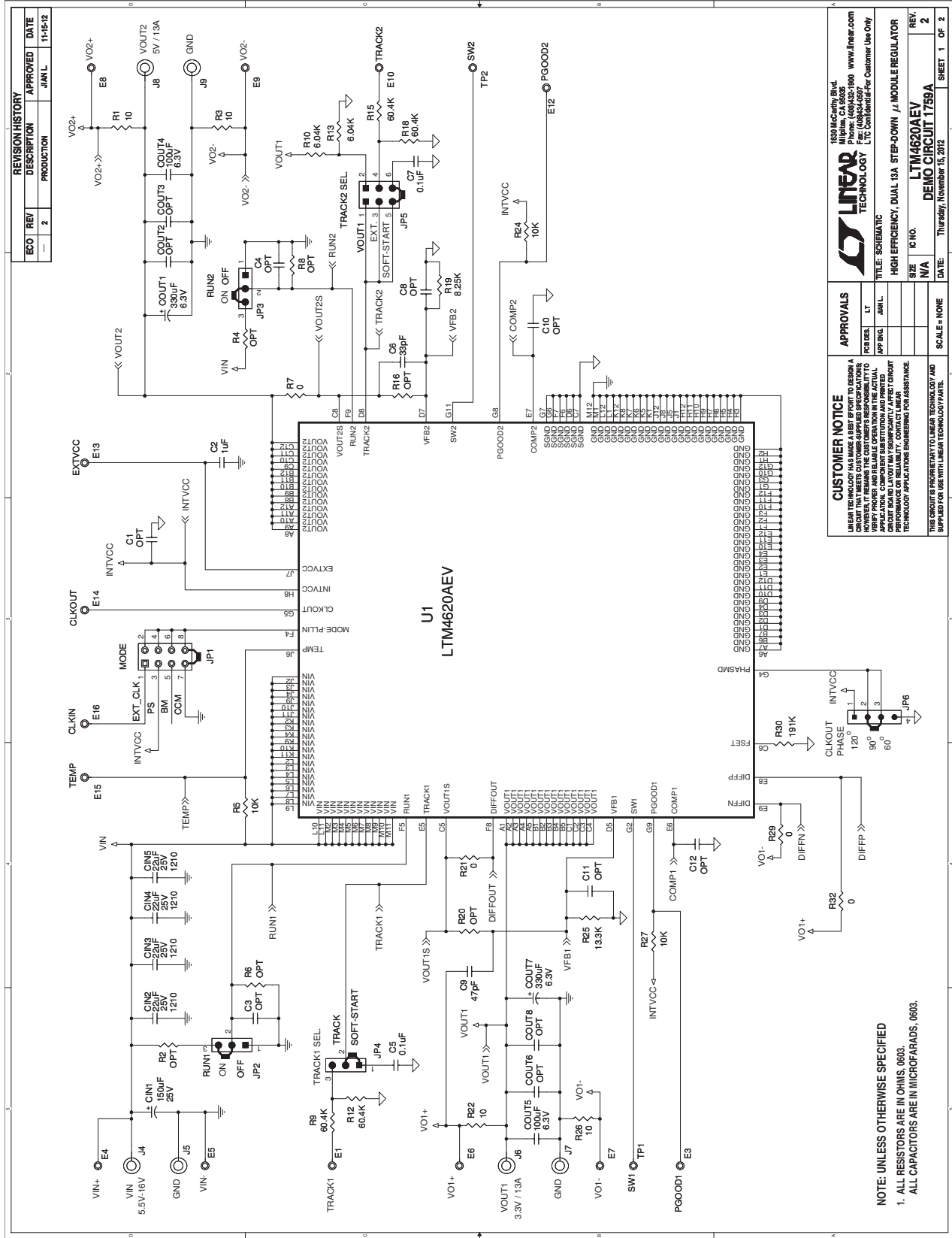
Figure 9. Thermal Capture at 12V_{IN}, 3.3V_{OUT} at 13A and 5V_{OUT} at 13A
(Ambient Temperature = 23°C, 200LFM Airflow and No Heat Sink)

PARTS LIST

ITEM	QTY	REFERENCE	PART DESCRIPTION	MANUFACTURER/PART NUMBER
Required Circuit Components				
1	1	CIN1	Cap., 150µF, 25V, Aluminum Electr.,	SUN ELECT., 25CE150AX
2	3	CIN2, CIN3, CIN4, CIN5	Cap., X5R, 22µF, 25V, 10%, 1210	MURATA, GRM32ER61E226KE15
3	2	COUT1, COUT7	Cap., 330µF, 6.3V, POSCAP 7343	SANYO, 6TPF330M9L
4	2	COUT4, COUT5	Cap., X5R, 100µF, 6.3V, 20% 1210	AVX, 12106D107MAT2A
5	1	C2	Cap., X7R, 1µF, 25V, 10%, 0805	AVX, 08053C105KAT2A
6	2	C5, C7	Cap., X5R, 0.1µF, 25V, 10%, 0603	AVX, 06033D104KAT
7	1	C6	Cap., 33pF, 10V, 10%, 0603	AVX, 0603ZC330KAT2A
8	1	C9	Cap., 47pF, 10V, 10%, 0603	AVX, 0603ZC470KAT2A
9	4	C13, C14, C15, C16	Cap., X7R, 1µF, 10V, 10%, 0603	AVX, 0603ZC105KAT
10	1	Q1	N-Channel 30-V Mosfet	VISHAY, SUD50N03-09P
11	4	R1, R3, R22, R26	Res., Chip, 10Ω, 1%, 0603	NIC, NRC06F10R0TRF
12	4	R5, R24, R27, R36	Res., Chip, 10k, 1%, 0603	YAGEO, RC0603FR-0710KL
13	4	R7, R21, R29, R32	Res., Chip, 0Ω, 1%, 0603	VISHAY, CRCW06030000Z0ED
14	4	R9, R12, R15, R18	Res., Chip, 60.4k, 1%, 0603	VISHAY, CRCW060360K4FKED
15	2	R10, R13	Res., Chip, 6.04k, 1%, 0603	YAGEO, RC060FR-0760K4L
16	1	R19	Res., Chip, 8.25k, 1%, 0603	VISHAY, CRCW06038K25FKED
17	1	R25	Res., Chip, 13.3k, 1%, 0603	VISHAY, CRCW060313K3FKED
18	1	R30	Res., Chip, 191k, 1%, 0603	VISHAY, CRCW0603191KFKED
19	1	R34	Res., Chip, 0Ω, 0.5W, 2010	TEPRO, RN6083
20	1	R37	Res., Chip, 0.015Ω, 2W, 2512	VISHAY, WSL2512R0150FEA
21	1	U1	LTM4620AEV 15X15X4.41-LGA	LINEAR TECH., LTM4620AEV
Additional Circuits				
22	0	COUT2, COUT3, COUT6, COUT8,	OPT 1210	OPT
23	0	C1	OPT 0805	OPT
24	0	C3, C4, C8, C10, C11, C12	OPT 0603	OPT
25	0	R2, R4, R6, R8, R11, R14, R16, R17, R20, R23, R28, R31, R33, R39, R40	OPT 0603	OPT
26	0	R35	OPT 2010	OPT
27	0	R38	OPT 2512	OPT
Hardware/Components (For Demo Board Only)				
28	16	E1, E3-E10, E12-E18	TESTPOINT, TURRET, 0.094"	MILL-MAX, 2501-2-00-80-00-00-07-0
29	3	J1, J2, J3	CONN, BNC, 5 PINS	CONNEX 112404
30	6	J4-J9	CONN, BANANA JACK, KEYSTONE-575-4	KEYSTONE 575-4
31	1	JP1	HEADER 4 PIN 0.079 DOUBLE ROW	SAMTEC, TMM104-02-L-D
32	1	JP6	HEADER 4 PIN 0.079 SINGLE ROW	SAMTEC, TMM104-02-L-S
33	3	JP2, JP3, JP4	HEADER 3 PIN 0.079 SINGLE ROW	SAMTEC, TMM103-02-L-S
34	1	JP5	HEADER 3 PIN 0.079 DOUBLE ROW	SAMTEC, TMM-103-02-L-D
35	4	MTGS at 4 corners	STAND-OFF, NYLON 0.50"	KEYSTONE, 8833(SNAP-ON)
36	6	XJP1-XJP6	SHUNT, 0.079" CENTER	SAMTEC, 2SN-BK-G

DEMO MANUAL DC1759A

SCHEMATIC DIAGRAM



DEMO MANUAL DC1759A

DEMONSTRATION BOARD IMPORTANT NOTICE

Linear Technology Corporation (LTC) provides the enclosed product(s) under the following **AS IS** conditions:

This demonstration board (DEMO BOARD) kit being sold or provided by Linear Technology is intended for use for **ENGINEERING DEVELOPMENT OR EVALUATION PURPOSES ONLY** and is not provided by LTC for commercial use. As such, the DEMO BOARD herein may not be complete in terms of required design-, marketing-, and/or manufacturing-related protective considerations, including but not limited to product safety measures typically found in finished commercial goods. As a prototype, this product does not fall within the scope of the European Union directive on electromagnetic compatibility and therefore may or may not meet the technical requirements of the directive, or other regulations.

If this evaluation kit does not meet the specifications recited in the DEMO BOARD manual the kit may be returned within 30 days from the date of delivery for a full refund. **THE FOREGOING WARRANTY IS THE EXCLUSIVE WARRANTY MADE BY THE SELLER TO BUYER AND IS IN LIEU OF ALL OTHER WARRANTIES, EXPRESSED, IMPLIED, OR STATUTORY, INCLUDING ANY WARRANTY OF MERCHANTABILITY OR FITNESS FOR ANY PARTICULAR PURPOSE. EXCEPT TO THE EXTENT OF THIS INDEMNITY, NEITHER PARTY SHALL BE LIABLE TO THE OTHER FOR ANY INDIRECT, SPECIAL, INCIDENTAL, OR CONSEQUENTIAL DAMAGES.**

The user assumes all responsibility and liability for proper and safe handling of the goods. Further, the user releases LTC from all claims arising from the handling or use of the goods. Due to the open construction of the product, it is the user's responsibility to take any and all appropriate precautions with regard to electrostatic discharge. Also be aware that the products herein may not be regulatory compliant or agency certified (FCC, UL, CE, etc.).

No License is granted under any patent right or other intellectual property whatsoever. **LTC assumes no liability for applications assistance, customer product design, software performance, or infringement of patents or any other intellectual property rights of any kind.**

LTC currently services a variety of customers for products around the world, and therefore this transaction **is not exclusive**.

Please read the DEMO BOARD manual prior to handling the product. Persons handling this product must have electronics training and observe good laboratory practice standards. **Common sense is encouraged.**

This notice contains important safety information about temperatures and voltages. For further safety concerns, please contact a LTC application engineer.

Mailing Address:

Linear Technology
1630 McCarthy Blvd.
Milpitas, CA 95035

Copyright © 2004, Linear Technology Corporation