

SPECIFICATION FOR APPROVAL



TO: _____

PART NO.		REV.		DELTA SAMPLE ISSUE NO	
PART NAME	EMI FILTER			DELTA MODEL	16DPCG5C
ORDER P/N.	16DPCG5C			SAMPLE ISSUE DATE	

1. ELECTRICAL CHARACTERISTICS:

- 1-1. VOLTAGE RATING 115/250VAC
- 1-2. CURRENT RATING
 - A. AT 115VAC 16 A RMS Max.
 - B. AT 250VAC 16 A RMS Max.
- 1-3. OPERATING FREQUENCY..... 50/60 Hz
- 1-4. LEAKAGE CURRENT: EACH LINE TO GROUND
 - A. @115VAC 60Hz 0.40 mA Max.
 - B. @250VAC 50Hz 0.80 mA Max.
- 1-5. HIPOT RATING
 - A. LINE TO GROUND 2250VDC/1Min.
 - B. LINE TO LINE 1700VDC/1Sec.
- 1-6. TEMPERATURE RANGE: -25 TO +100 DEGREE C
- 1-7. MINIMUM INSERTION LOSS IN dB: (AT 50 OHM SYSTEM)

FREQ. MHz	.01	.05	.10	.15	.50	1.0	5.0	10	30
COM. MODE dB	2	7	10	20	35	45	60	50	35
DIF. MODE dB	0	8	10	12	40	40	45	45	50

1-8. SAFETY

REPORT BY	CHECKED BY	APPROVED BY		
			REV.	

DELTA ELECTRONICS, INC.

186 RUEY KUANG ROAD, NEIHU. TAIPEI 114,
TAIWAN, R.O.C.
TEL:886-2-87972088 FAX:886-2-87972120

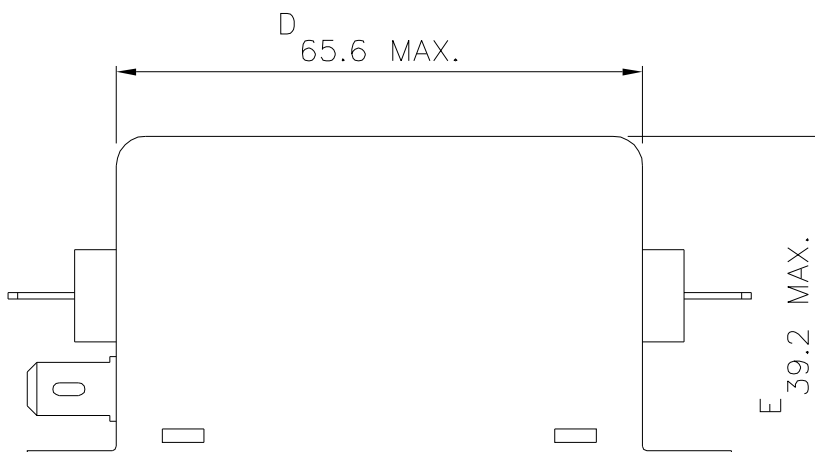
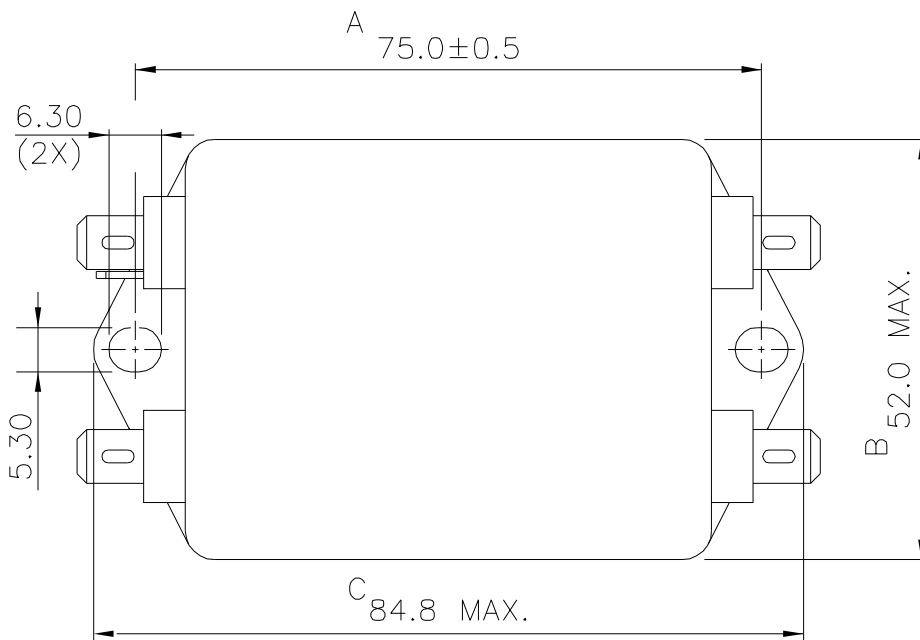
SPECIFICATION FOR APPROVAL



TO: _____

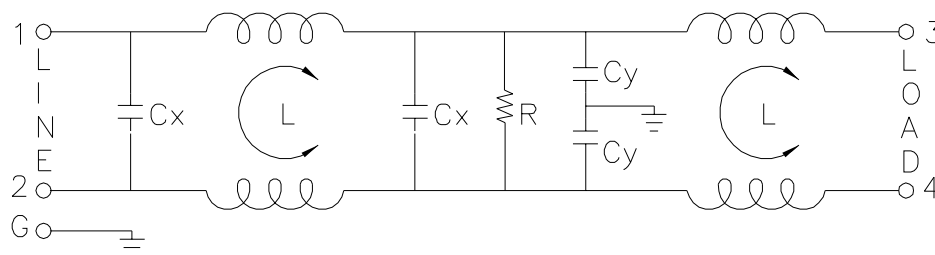
PART NO.		REV.		DELTA SAMPLE ISSUE NO	
PART NAME	EMI FILTER			DELTA MODEL	16DPCG5C
ORDER P/N.	16DPCG5C			SAMPLE ISSUE DATE	

2. PHYSICAL DIMENSIONS:



UNIT: mm

3. SCHEMATIC:



L: 0.65mH
 Cx: 0.33uF
 Cy: 4700pF
 R: 1.0MΩ

REPORT BY	CHECKED BY	APPROVED BY	UNLESS OTHERWISE SPECIFIED DIMENSION TOLERANCE		
			DCEIMALS	.X±	.XX±
					ANGLES±
			REV.		