

MADE IN AMERICA PRODUCTION

DIMENSIONS IN INCHES DO NOT SCALE
 CONDITIONS THIS DRAWING

NUMBER 153210

.134 DIA.
 [3.4]

.121 [3.013]
 .118 [2.997]

SECTION A-A'

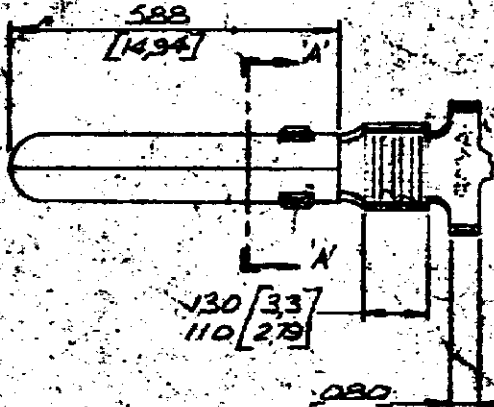
.130 [3.3]
 .105 [2.67]

SECTION B-B'

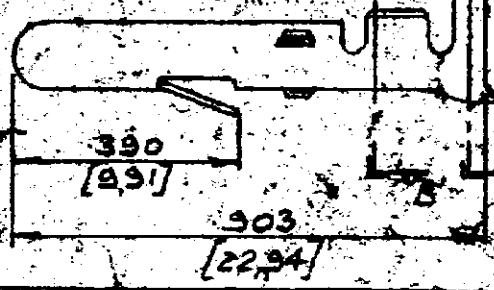
.220 [5.59]
 .195 [4.95]

SECTION C-C'

INSULATION 050-170 [203-395]



.080 [2.03]



REVISE	DESCRIPTION	DATE	BY	CHKD
153210-5	DRASS			
153210-4	DRASS			
153210-3	DRASS			
153210-2	DRASS			
153210-1	DRASS			

L	153210-1 P.L.C. OBSOLETE	AEM 3054	208	
K	WIRE CLEAR - 14 DIA MIN. C.S.			
J	WIRE BARENESS SPECIFICATIONS ADDED	F		
H	.134 DIA. MIN. WRS. 154 J.C.			
G	1 - 1 AMPERAGE RANGES	C.E.		
F	REVISION NO CHANGE	D.P.	RS	
E	REVISION RECORD	DR	CHK	DATE
D				
C				
B				
A				

AMP OF GREAT BRITAIN LTD
 1971

AMP
 of Great Britain Ltd

TERMINAL HOUSE
 STANMORE,
 MIDDLESEX

CUSTOMER COPY
 REFERENCE ONLY

WIRE - GAUGE - INSULATION
 05-15-15 36 P/104

TOLERANCE EXCEPT AS NOTED
 1/10 1/50 1/100 1/200 1/500 1/1000

SCALE 2:1

E A E-153210

113 [3 MM] LANGED PIN X 1