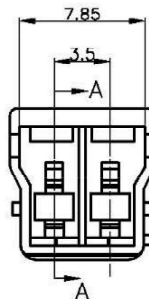
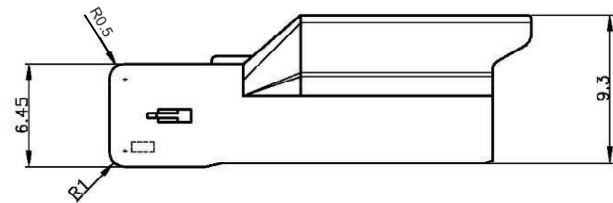
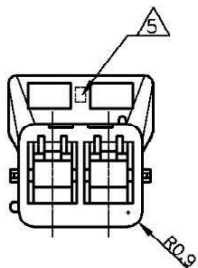


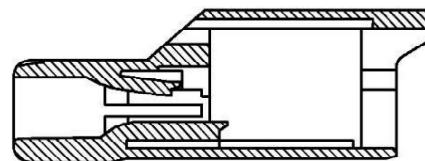
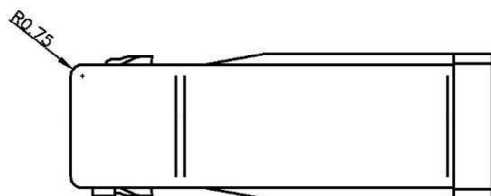
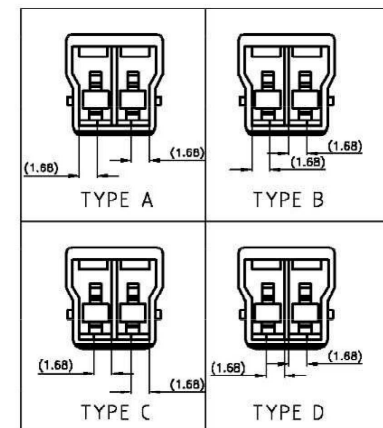
注) 1.一般公差:±0.25
 △材料: 66ナイロン ガラス無(UL94V-0)
 △かん合相手製品型番
 プラグハウジング: TABLE参照のこと
 タブコンタクト: 1565080-1,1612335-1
 4. 適応プレート型番: 1565089-1
 △表1参照
 △表1参照

TABLE 1

	生産場所 (MANUFACTURING LOCATION)	
	韓国 (KOREA)	中国 (CHINA)
△	CAVITY MARK	
△	TRADE MARK	TRADE MARK CAVITY MARK+ •



KEYING TYPE



断面A-A

- NOTES)
- GENERAL TOLERANCE: ±0.25
 - MATERIAL : PA66 (UL94 V-0)
 - MATING CONN. P/N
PLUG HOUSING: SEE TABLE
TAB CONTACT ; 1565080-1, 1612335-1
 - APPLICABLE PLATE P/N : 1565089-1
 - SEE TABLE 1
 - SEE TABLE 1
 - MATERIAL : PA66 (UL94 V-0), PARTS COMPLY WITH
GLOW WIRE REQUIREMENTS (GWT) PER IEC 60335-1
 - PRELIMINARY P/N

THIS DRAWING IS A CONTROLLED DOCUMENT.		DWN A.OISHI 30 MAY. '02	Tyco Electronics Tyco Electronics AMP K.K. Kawasaki, Japan	
DIMENSIONS: 単位: 耗 mm		CHK M.SHINDO 30 MAY. '02	NAME 名称 GRACE INERTIA CONNECTOR 3.5 2 POS CAP HOUSING	
TOLERANCES UNLESS OTHERWISE SPECIFIED: 一般公差		APVD M.SHINDO 30 MAY. '02	製品仕様 108-5810	
0 PLC ± - 1 PLC ± - 2 PLC ± - 3 PLC ± - 4 PLC ± - ANGLES ± -		APPLICATION SPEC 取付適用規格 114-5306	APPLICATION SPEC 取付適用規格 114-5306	
MATERIAL 材料	FINISH 仕上	WEIGHT -	SIZE A3	CAGE CODE 00779
△ 2 △ 7		DRAWING NO 番号 1565085		RESTRICTED TO -
CUSTOMER DRAWING			SCALE 尺度 -	SHEET 1 OF 1 REV C2

THIS DRAWING IS UNPUBLISHED.

RELEASED FOR PUBLICATION

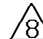
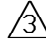
-. .

© COPYRIGHT - By -

ALL RIGHTS RESERVED.

REVISIONS

P	LTR	DESCRIPTION	DATE	DWN	APVD
-	-	SEE SHEET 1	-	-	-

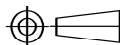
7	1-1565081-6	A	BLACK	1-1565085-6
	1-1565081-5	A	GREEN	1-1565085-5 
	3-1565081-5	D	YELLOW	3-1565085-5
	2-1565081-4	C	BLUE	2-1565085-4
	1-1565081-3	B	RED	1-1565085-3
	1-1565081-1	A	NATURAL	1-1565085-1
2	1565081-6	A	BLACK	1565085-6
	1565081-5	A	GREEN	1565085-5
	3-1565081-4	D	YELLOW	3-1565085-4
	2-1565081-3	C	BLUE	2-1565085-3
	1-1565081-2	B	RED	1-1565085-2
	1565081-1	A	NATURAL	1565085-1
MATERIAL	 MATING HSG P/N	KEYING TYPE	COLOR	P/N

THIS DRAWING IS A CONTROLLED DOCUMENT.

22APR2016

DIMENSIONS:

mm



TOLERANCES UNLESS OTHERWISE SPECIFIED:

- 0 PLC ±-
- 1 PLC ±-
- 2 PLC ±-
- 3 PLC ±-
- 4 PLC ±-
- ANGLES ±-

MATERIAL

FINISH

DWN -

CHK -

APVD -

PRODUCT SPEC -

APPLICATION SPEC -

WEIGHT 0

CUSTOMER DRAWING



TE Connectivity

GRACE INERTIA CONNECTOR 3.5
2 POS CAP HOUSING

SIZE A.3 CAGE CODE 00779 DRAWING NO C=1565085 RESTRICTED TO -

SCALE NONE SHEET 2 of 2 REV C2