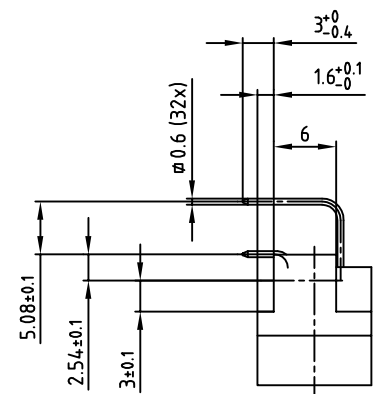
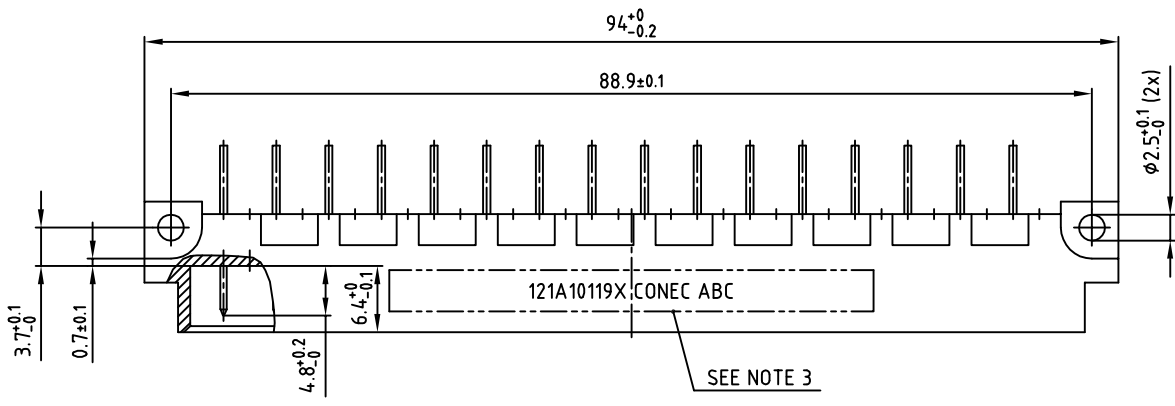
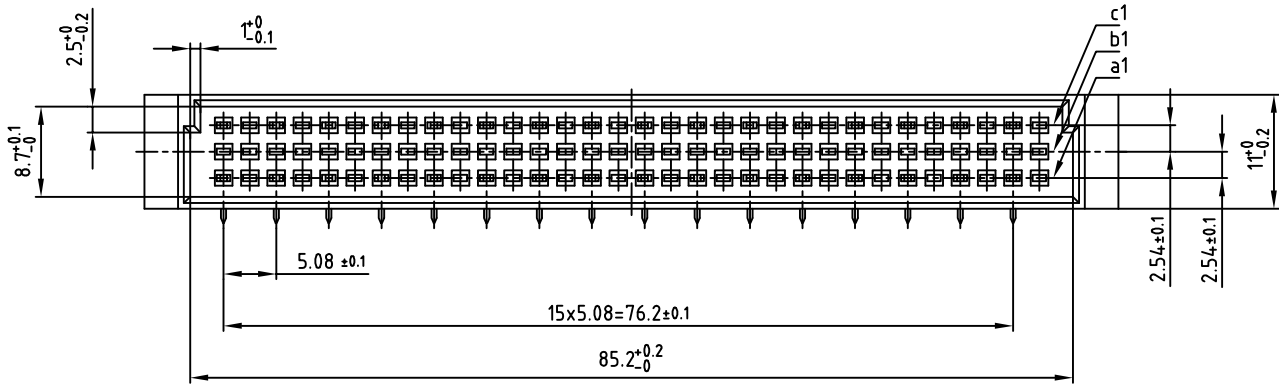
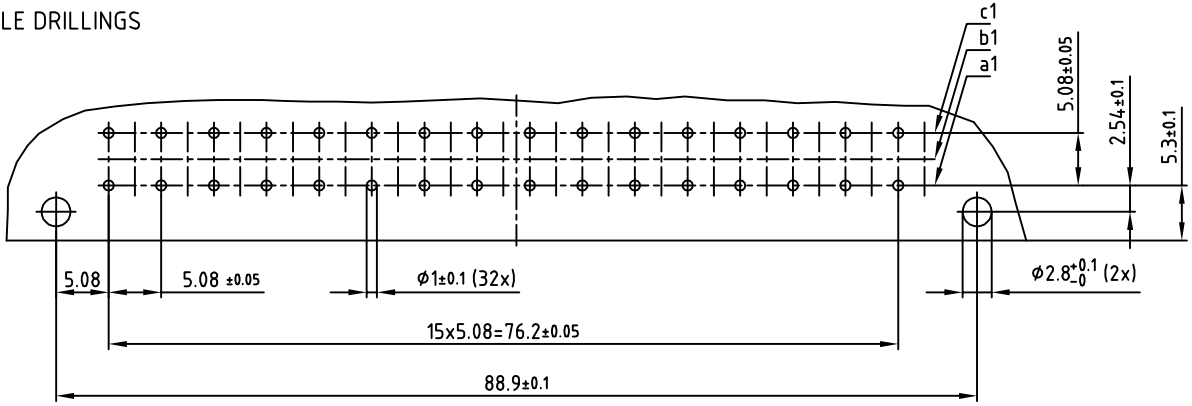


used for: DIN EN 60603-2 TYPE "C"



- NOTES:
- INSULATORS: PBT GF UL 94 V-0, GREY
 - CONTACTS: COPPER ALLOY
PLATING: GOLD OVER NICKEL
50 MATING CYCLES
 - CONNECTOR IS PART MARKED: 121A10119X CONEC ABC

P.C.B. HOLE DRILLINGS



Directive 2002/95/EC RoHS compliant

THIS DRAWING MAY NOT BE COPIED OR REPRODUCED IN ANY WAY, AND MAY NOT BE PASSED ON TO A THIRD PARTY, WITHOUT WRITTEN PERMISSION. OWNERSHIP AND COPYRIGHT OF CONEC GMBH DO NOT ALTER CAD DRAWING BY HAND

rev.	description	date	name
a	Original		

tolerance		
	dim. in mm	
2014	date	name
drawn	05.04.	Henneboel
appd.	05.04.	Lehnenlühler
norm	DIN EN 60603-2	
d-old		

scale:	2:1
material:	SEE NOTES
title:	MALE CONNECTOR TYPE "C" 32pos. ANGLED
dwg no:	12K3A317
part no:	121A10119X

DIN-A
3
sh:1/1