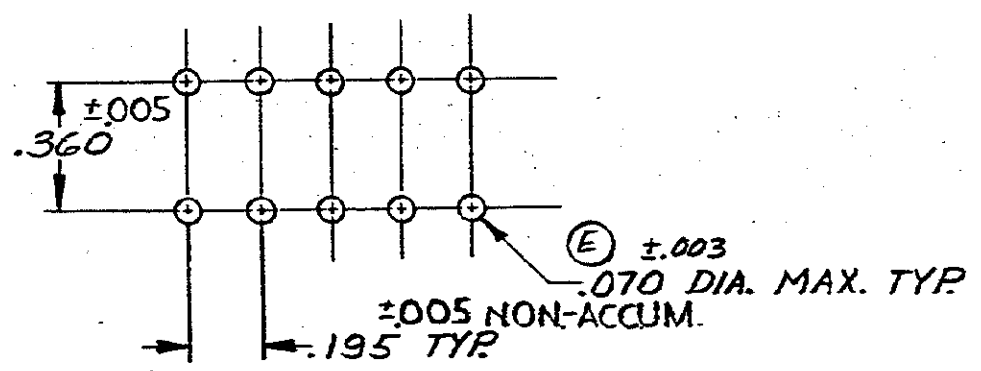
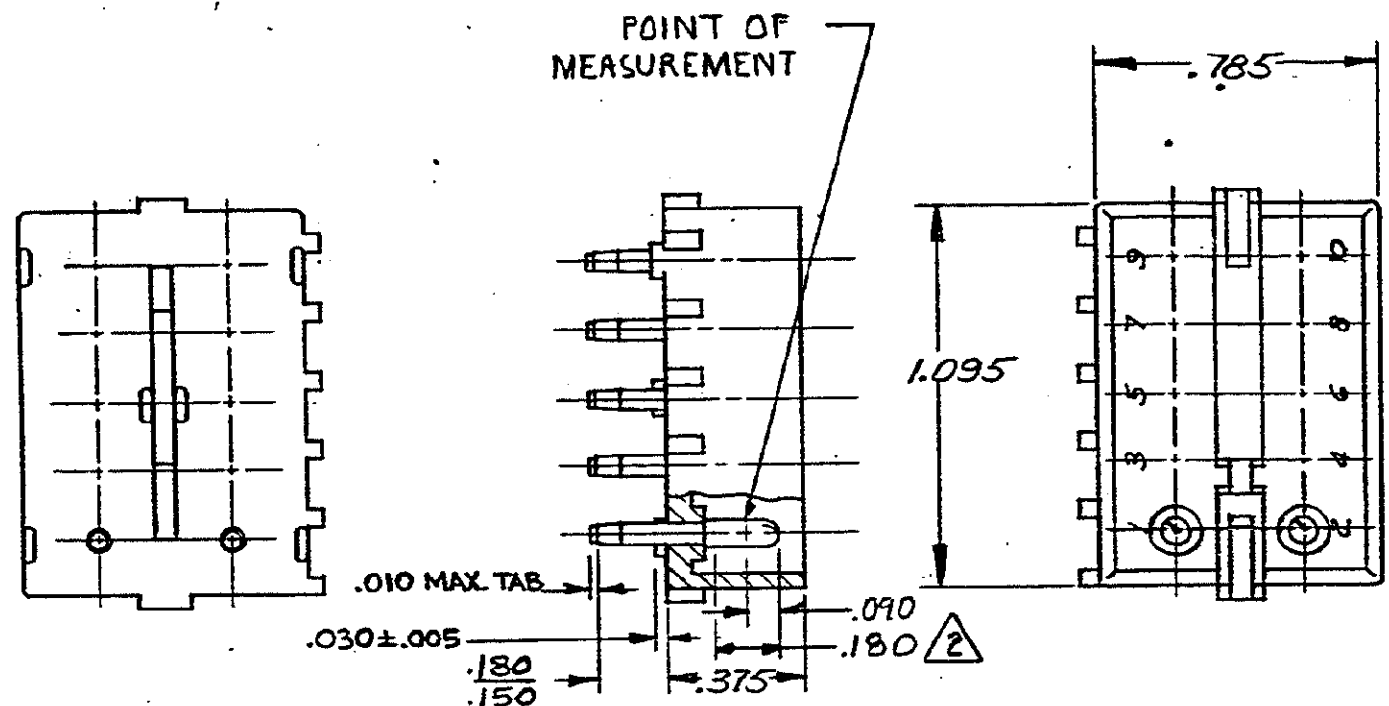


2

S



RECOMMENDED LAYOUT FOR
.062 P.C. BOARD

- 1. PARTS COMPLY WITH AMP SOLDERABILITY SPEC. NO. 109-11-3.
- 2 CONTACT IS PLATED OVERALL WITH .000050 NICKEL, THEN .000030 GOLD OVER CONTACT LENGTH INDICATED AND MATTE TIN ON SOLDER TAIL END.

ASSEMBLY NO.	HSG. MATL & COLOR	PIN MATL & FINISH
2-380991-0	NYLON - NATURAL	COPPER ALLOY - GOLD
1-380991-0	NYLON - NATURAL	COPPER ALLOY - PRE-TIN

DIMENSIONS IN INCHES. DO NOT SCALE PRINT.

DR 9. Edman 6-12-73 CHK E. Croner 6-13-73 DE APP CM [Signature] 6/15/73		MATERIAL AND FINISH SEE-TABLE WIRE - RANGE - INSULATION TOLERANCE EXCEPT AS NOTED ±.015 ± 1° 0'		CUSTOMER COPY REFERENCE ONLY CLASS # TYPE # NO 380991 NAME 10 CIRCUIT MATE-N-LOK P.C. BOARD PIN HEADER	
T1 REVISED PER ECO-11-005294 LTR REVISION RECORD		RK HMR 08APR71 DR CHK DATE		NUMBER 166091 REQUIRED PER ASSEMBLY DESCRIPTION	