



Identification

Part No.

Drawing

Dimensions in mm

**Cable assembly har-mik®
pin and socket, 68 pole,
male**

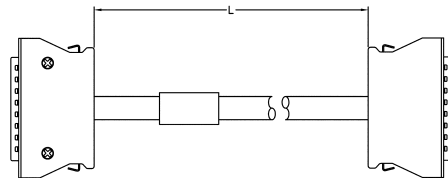
Hood: metal hood with top entry

Cable: 34 twisted pairs, AWG 28, shielded, PVC

Wiring: 1:1

- Length: L = 0.5 m
- L = 1.0 m
- L = 2.0 m
- L = 5.0 m
- L = 10.0 m
- L = 15.0 m
- L = 20.0 m

- 33 60 214 5000 102
- 33 60 213 1000 103
- 33 60 213 2000 104
- 33 60 213 5000 105
- 33 60 212 1000 106
- 33 60 212 1500 107
- 33 60 212 2000 108



**Cable assembly har-mik®
bellows, 36 pole, male**

Hood: shielded plastic hood with top entry

Cable: 18 twisted pairs, AWG 28, shielded, PVC

Wiring: 1:1

- Length: L = 0.5 m
- L = 1.0 m
- L = 2.0 m
- L = 5.0 m
- L = 10.0 m
- L = 15.0 m
- L = 20.0 m

- 33 60 214 5000 088
- 33 60 211 0010 089
- 33 60 211 0020 090
- 33 60 211 0050 091
- 33 60 211 0100 092
- 33 60 211 0150 093
- 33 60 211 0200 094

